

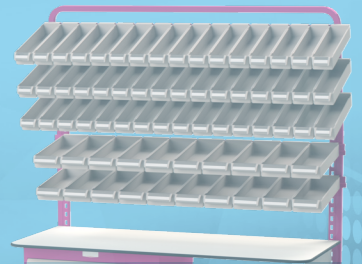
Villard

DESIGNER AND MANUFACTURER OF HOSPITAL FURNITURE

eoli
Modular Equipment

**STORAGE
SOLUTIONS**

PREPARATION



TRANSFER



STORAGE



DISTRIBUTION



QUALITY REQUIREMENT

www.villard-medical.com

CABINET WITH DRAWERS

eoli 600x400



Ref: **1007.01C01** Cabinet exactly equipped as per picture:

- Epoxy coated body, 8 colors, ABS interior ladders
- 12 drawers (3 big, 4 medium, 5 small)
- 1 push bar included - removable on request
- Key lock
- 4 Wheels Ø 125 mm, 2 brakes
- 68 W x 49 D x 195 HT cm

Ref: **1007.02C01** - Cabinet exactly equipped as per picture:

- Epoxy coated body, 8 colors, ABS interior ladders
- 10 drawers (2 big, 4 medium, 3 small)
- 1 push bar included - removable on request
- Key lock
- 4 Wheels Ø 125 mm, 2 brakes
- 68 W x 49 D x 165 HT cm

EXTRA ACCESSORIES



Foldable shelf for cabinet
Ref. **1700.24**



Additional push handle
Ref. **1700.21**



Medical rail for cabinet
Ref. **1700.22**



4 Wheel buffers
Ref. **1700.20**

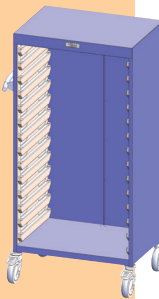


CREATE YOUR CABINET WITH DRAWERS

eoli 600x400

1

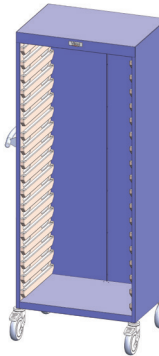
SELECT THE BASE



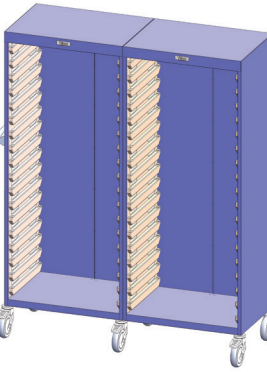
Ref. **1007.03**
64 x 46 x 134 HT cm
14 levels



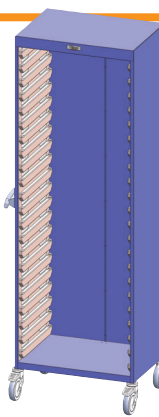
Ref. **1007.08**
128 x 46 x 134 HT cm
2 x 14 levels



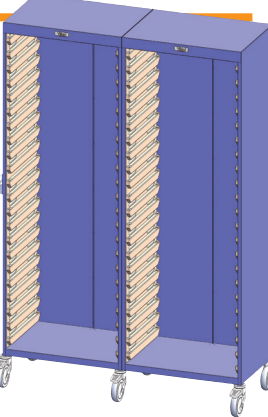
Ref. **1007.02**
64 x 46 x 164 HT cm
18 levels



Ref. **1007.07**
128 x 46 x 164 HT cm
2 x 18 levels



Ref. **1007.01**
64 x 46 x 195 HT cm
22 levels



Ref. **1007.06**
128 x 46 x 195 HT cm
2 x 22 levels

2

LOCKING



Key lock Ref. **1700.01**



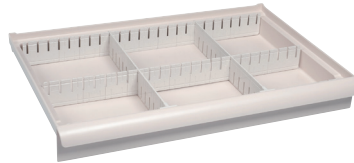
Code lock Ref. **1700.02**



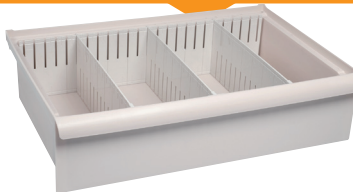
Badge lock Ref. **1700.03**

3

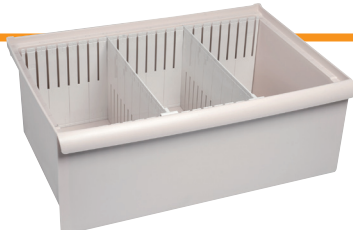
DRAWERS



Drawer 1 level - ref. **1600.30** (without kit)
600 x 400 x 63 mm ht



Drawer 2 levels - ref. **1600.31** (without kit)
600 x 400 x 138 mm ht



Drawer 3 levels - ref. **1600.32** (without kit)
600 x 400 x 216 mm ht

4

COMPARTMENTS (adjustable)

COMPARTMENTS for small drawer 1 level

2 compts.	1600.70	8 compts.	1600.74
3 compts.	1600.71	12 compts.	1600.75
4 compts.	1600.72	18 compts.	1600.76
6 compts.	1600.73	24 compts.	1600.77

COMPARTMENTS for medium drawer 2 levels

2 compts.	1600.80	8 compts.	1600.84
3 compts.	1600.81	12 compts.	1600.85
4 compts.	1600.82	18 compts.	1600.86
6 compts.	1600.83	24 compts.	1600.87

COMPARTMENTS for big drawer 3 levels

2 compts.	1600.90	8 compts.	1600.94
3 compts.	1600.91	12 compts.	1600.95
4 compts.	1600.92	18 compts.	1600.96
6 compts.	1600.93	24 compts.	1600.97

5

COLOURS



CABINET WITH ROLLING SHUTTER

eolis 600x400

Cabinets format 600 x 400 compatible with all the Eolis range equipments (drawers, baskets, shelves...).
Perfectly smooth surfaces without nook or unevenness, resistant to all disinfectants currently used in hospital.

We have developed a large range of cabinets with different configurations: fully opened or closed, with baskets or drawers.
We also offer different pharmacy cabinets.



Ref: **1007.51C01** Cabinet exactly equipped as per picture:

- Epoxy coated body, 8 colors, ABS interior ladders
- 9 ABS baskets (3 big, 4 medium, 2 small)
- 1 removable push bar included
- Extractable rolling shutter enabling perfect disinfection
- Key lock
- 4 Wheels Ø 125 mm, 2 brakes
- Sticker MEDICATION
- 69 W x 57 D x 192 HT cm (other heights available: 164 and 134 cm)



Ref: **1007.56C01** Cabinet exactly equipped as per picture:

- Epoxy coated body, 8 colors, ABS interior ladders
- 20 drawers (6 big, 10 medium, 2 small)
- 1 removable push bar included
- Extractable rolling shutter enabling perfect disinfection
- Key lock
- 4 Wheels Ø 125 mm, 2 brakes
- Sticker MEDICATION
- 134 W x 57 D x 192 HT cm (other heights available: 164 and 134 cm)



Ref: **1007.51C02** Medication cabinet exactly equipped as per picture:

- Epoxy coated body, 8 colors, ABS interiors ladders, key lock
- 38 patient bins + 6 drawers
- 1 removable push bar included
- Extractable rolling shutter enabling perfect disinfection
- 4 wheels Ø 125 mm, 2 brakes
- Sticker MEDICATION
- 69 W x 57 D x 192 HT cm (other heights available: 162 and 131 cm)



Ref: **1007.91C01** Medication cabinet exactly equipped as per picture:

- Epoxy coated body, 8 colors, ABS interior ladders, key lock + 2 drawers
- 192 pill dispensers on 24 trays (8 per tray: Monday, Tuesday... till Sunday)
- 1 removable push bar included
- Extractable rolling shutter enabling perfect disinfection
- 4 wheels Ø 125 mm, 2 brakes
- Sticker MEDICATION
- 69 W x 57 D x 192 HT cm (other heights available: 162 and 131 cm)

For basket separators, go to page 17.



Toxic drugs cabinet

Ref: **1101.84**

- With steel door and key lock



Probes holder shelf

Ref: **1100.25**

- telescopic 60 hooks



Telescopic epoxy steel shelf

Ref: **1101.99**



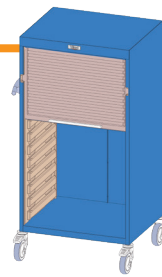
CREATE YOUR CABINET WITH ROLLING SHUTTER

eoli 600x400

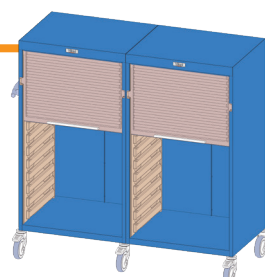
1

THE BASE

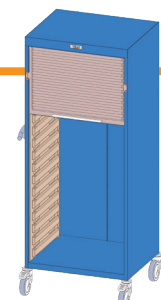
- Including the rolling shutter



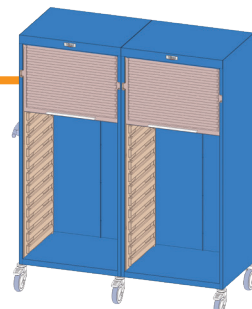
Ref. **1007.53**
69 x 57 x 131 HT cm
13 levels



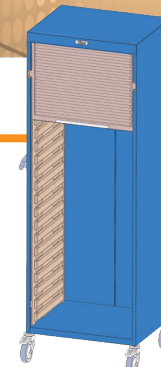
Ref. **1007.58**
134 x 57 x 131 HT cm
2 x 13 levels



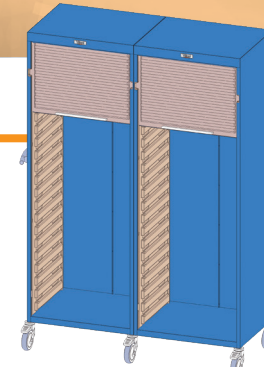
Ref. **1007.52**
69 x 57 x 162 HT cm
17 levels



Ref. **1007.57**
134 x 57 x 162 HT cm
2 x 17 levels



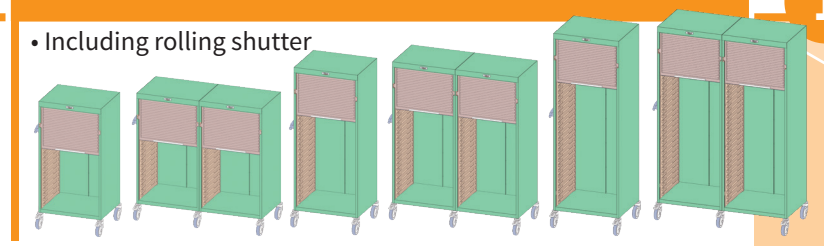
Ref. **1007.51**
69 x 57 x 192 HT cm
21 levels



Ref. **1007.56**
134 x 57 x 192 HT cm
2 x 21 levels

High capacity thin ladder cabinet **only** for pills dispenser 1103.37 and 1103.39 (includ. rolling shutters).

- Including rolling shutter



Ref. **1007.93** 18 levels
Ref. **1007.98** 2 x 18 levels
Ref. **1007.92** 24 levels
Ref. **1007.97** 2 x 24 levels
Ref. **1007.91** 30 levels
Ref. **1007.96** 2 x 30 levels

2

LOCKING



Key lock Ref. **1700.10**



Code lock Ref. **1700.11**



Badge lock Ref. **1700.12**



Key lock Ref. **1700.10**



Code lock Ref. **1700.11**

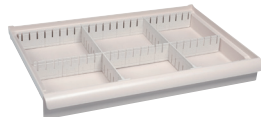


Badge lock Ref. **1700.12**

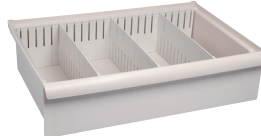
3

DRAWERS

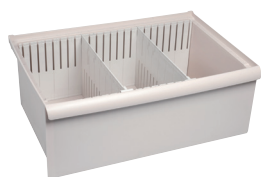
1 level - ref. **1600.30**
600 x 400 x 63 mm ht



2 levels - ref. **1600.31**
600 x 400 x 138 mm ht



3 levels - ref. **1600.32**
600 x 400 x 216 mm ht



COMPARTMENTS

Compartments for small drawer 1 level
2 cpts. **1600.70** 8 cpts. **1600.74**
3 cpts. **1600.71** 12 cpts. **1600.75**
4 cpts. **1600.72** 18 cpts. **1600.76**
6 cpts. **1600.73** 24 cpts. **1600.77**

COMPARTMENTS for medium drawer 2 levels

2 cpts. **1600.80** 8 cpts. **1600.84**
3 cpts. **1600.81** 12 cpts. **1600.85**
4 cpts. **1600.82** 18 cpts. **1600.86**
6 cpts. **1600.83** 24 cpts. **1600.87**

COMPARTMENTS for big drawer 3 levels

2 cpts. **1600.90** 8 cpts. **1600.94**
3 cpts. **1600.91** 12 cpts. **1600.95**
4 cpts. **1600.92** 18 cpts. **1600.96**
6 cpts. **1600.93** 24 cpts. **1600.97**

SHELVES

Telescopic shelf - ref. **1101.99**
• 1 level



Resin shelf - ref. **1100.58**
• 1 level



Polypropylene shelf - ref. **1100.26**
• With rim - 1 level



BASKETS

1 level ref. **1102.30** - 50 mm ht Separations



Length **1102.33**
Width **1102.34**

2 levels - ref. **1102.31** - 100 mm ht



Length **1102.35**
Width **1102.36**

3 levels - ref. **1102.32** - 200 mm ht



Length **1102.37**
Width **1102.38**

End stop **1102.39**



Label holders **1102.69**



PATIENT BINS

1 level - ref. **1100.26 OP3**

- 6 patient bins + 6 separations
- 90 x 385 x 60 mm ht each



1 level - ref. **1100.26 OP4**

- 4 patients bins + 4 separations
- 130 x 385 x 60 mm ht each



1 level - ref. **1100.26 OP5**

- 3 patients bins + 3 separations
- 178 x 385 x 60 mm ht each



2 levels - ref. **1100.26 OP6**

- 6 patient bins + 6 separations
- 90 x 385 x 136 mm ht each



2 levels - ref. **1100.26 OP7**

- 4 patients bins + 4 separations
- 130 x 385 x 136 mm ht each



2 levels - ref. **1100.26 OP8**

- 3 patients bins + 3 separations
- 178 x 385 x 136 mm ht each



MEDICATION TRAYS

1 level - ref. **1103.41**

- 7 pills dispenser
- with 3 separations
- 78 x 380 x 55 mm ht



1 level - ref. **1103.38**

- 8 pills dispenser
- with 3 separations
- 65 x 380 x 65 mm ht



1 level - ref. **1103.37**

- 8 pills dispenser
- with 3 separations
- 65 x 380 x 40 mm ht



1 level - ref. **1103.39**

- 10 pills dispenser
- with 4 separations
- 28 x 280 x 40 mm ht



CASSETTE and LABELS

2 levels - ref. **1600.36**
3 levels - ref. **1600.37**



Handle - ref. **1600.42**



Labels - ref. **1103.36**

- Colored sheets of 28 precut labels



Label Holder - ref. **1103.35**

- Pack of 24 label holders



Drawers, baskets, patient bins and medication trays can be mixed

Drawers, baskets, patient bins and medication trays can be mixed

4

COLOURS



COLOURS



5

ADD EXTRA ACCESSORIES (see pages 16 - 17)

ADD EXTRA ACCESSORIES (see pages 16 - 17)

5

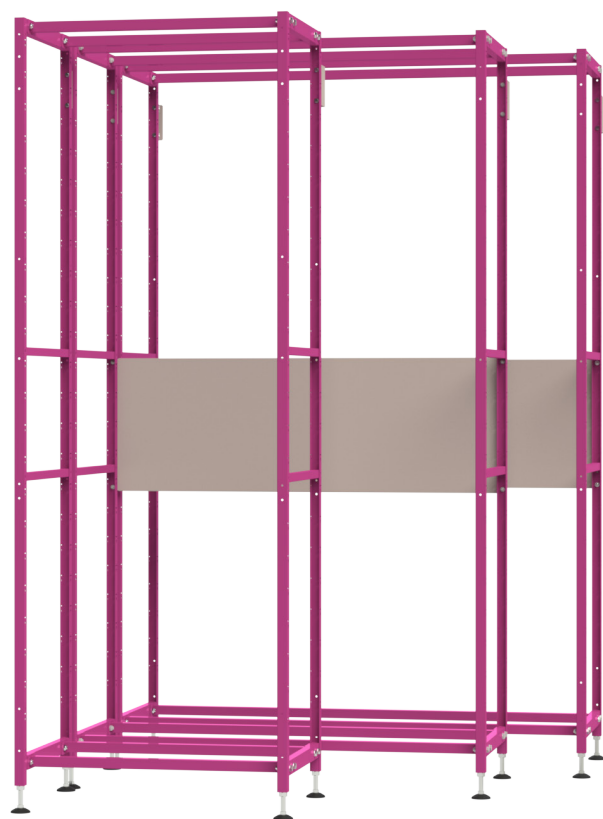
STORAGE SHELVING

FIXED - DEPTH 400

eolis 600x400

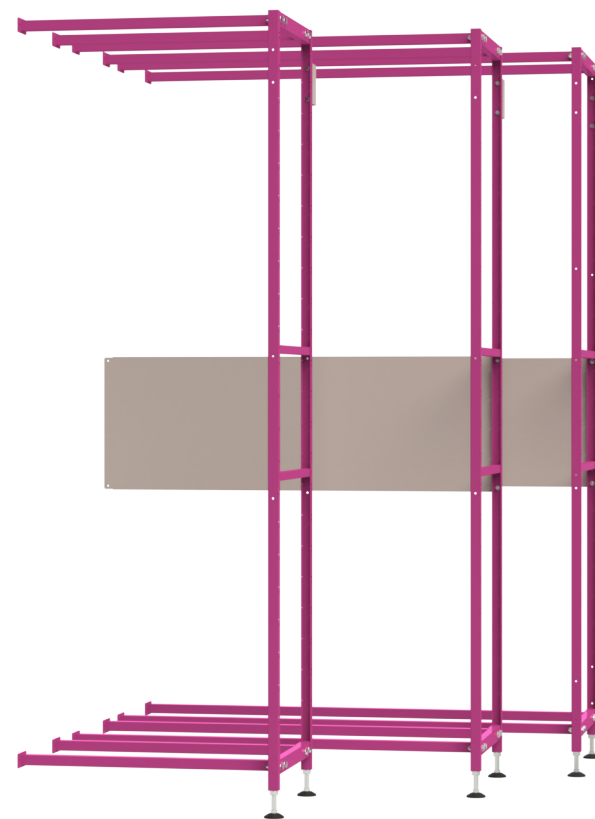
Eolis® Modular Shelving designed to optimize hospital storage areas (pharmacy, operating room, ...) and assist the healthcare staff with ergonomic (mobile, reclining), hygienic (removable equipments) and effective (all-in/all-out system) solutions.

DEPTH 400 FIXED SHELVING BASE SHELVING UNITS



600x400 shelving unit base	Ref. 1002.31
1000x400 shelving unit base*	Ref. 1002.78
1200x400 shelving unit base*	Ref. 1002.82

DEPTH 400 FIXED SHELVING ADDITIONAL SHELVING SECTIONS



600x400 additional shelving section	Ref. 1002.32
1000x400 additional shelving section	Ref. 1002.79
1200x400 additional shelving section	Ref. 1002.83

FEATURES

ISO standard size 600x400 frames and equipments. Fitting with all the Eolis® 600x400 product range (transfer & storage cabinets, workstations and drawer blocks, trolleys and carts).

- Welded steel lateral frames with epoxy coating (8 colours choice)
- «U» frame structure (ladder & strut) built with screws and nuts
- Furnished wall (or back-to-back) mounting to stabilize the shelving and equip them with telescopic elements (drawers and shelves)
- *1000x400 and 1200x400 shelving furnished with back stiffener
- 4 height-adjustable floor pads
- Delivered knocked down

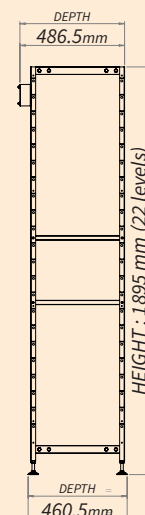
Maximum load capacity

Shelving (Base or Extension)	200kg
Fixed shelves	80kg
Telescopic drawers & shelves	50kg

Overall dimensions (mm)

Fixed shelving - Depth 400

	Space available	Space between each slides
	22 levels with straight slides	75mm
	20 levels from 1 inclined slide	
	BASE	EXTENSION
	663mm (L. 600)	638mm (L. 600)
	1068mm (L. 1000)	1043mm (L. 1000)
	1268mm (L. 1200)	1243mm (L. 1200)



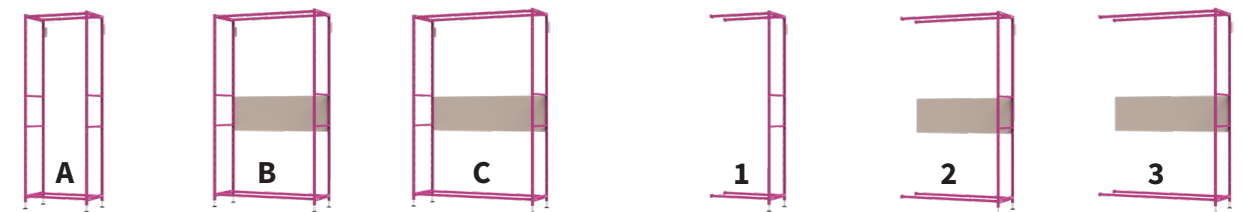
CREATE YOUR MODULAR SHELVING

FIXED - DEPTH 400

eolis 600x400

1

SELECT THE BASE UNITS + ADDITIONAL SECTIONS | DEPTH 400



Shelving units BASE - Depth 400

A. 600x400	Ref. 1002.31
B. 1000x400*	Ref. 1002.78
C. 1200x400*	Ref. 1002.82

*furnished with back stiffener

ADDITIONAL shelving sections - Depth 400

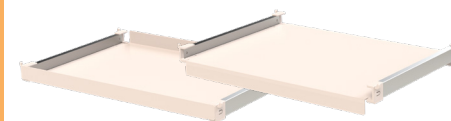
> All the **ADDITIONAL** shelving sections below fit with all the **Shelving Units BASE**.

1. 600x400	Ref. 1002.32
2. 1000x400*	Ref. 1002.79
3. 1200x400*	Ref. 1002.83



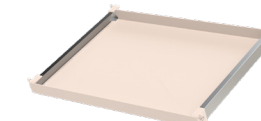
2

FIXED SHELVES one pair of slides included



Fixed horizontal shelves with raised or turned down edges (reversible) - Depth 400

600x400	Ref. 1200.30
1000x400	Ref. 1200.32
1200x400	Ref. 1200.34



Fixed and inclined shelves with raised edges

Depth 400	
600x400	Ref. 1200.42
1000x400	Ref. 1200.44
1200x400	Ref. 1200.46

Extra Accessories for fixed shelves



Divider for fixed shelves with raised edges
Depth 400 Ref. **1200.48**

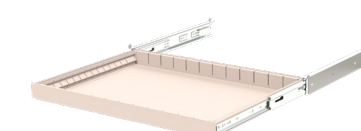
3

TELESCOPIC SHELVES/DRAWERS pair of telescopic slides included



Telescopic shelves - Depth 400

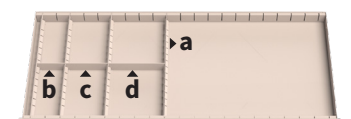
600x400	Ref. 1200.50
1000x400	Ref. 1200.52
1200x400	Ref. 1200.54



Telescopic drawers - Depth 400

600x400 (Width: 13 notches)	Ref. 1200.56
1000x400 (Width: 21 notches)	Ref. 1200.58
1200x400 (Width: 26 notches)	Ref. 1200.60

Extra Accessories for telescopic drawers



Dividers for telescopic drawers - Depth 400

a. Depth divider	Ref. 1200.62
b. Small divider* (2 notches - 78mm)	Ref. 1200.64
c. Medium divider* (3 notches - 128mm)	Ref. 1200.65
d. Large divider* (4 notches - 175mm)	Ref. 1200.66

* + a. Depth divider required - Ref. **1200.62**

4

TOP/BOTTOM SHELVES



Top or bottom shelves - Depth 400

600x400	Ref. 1200.36
1000x400	Ref. 1200.38
1200x400	Ref. 1200.40



EXTRA ACCESSORIES PAGES 16 - 17

LABEL HOLDERS



Horizontal label holder for drawers or shelves with raised edges - Ref. **1106.06**

Adhesive label holder for drawers or shelves with turned down edges - Ref. **1101.45**

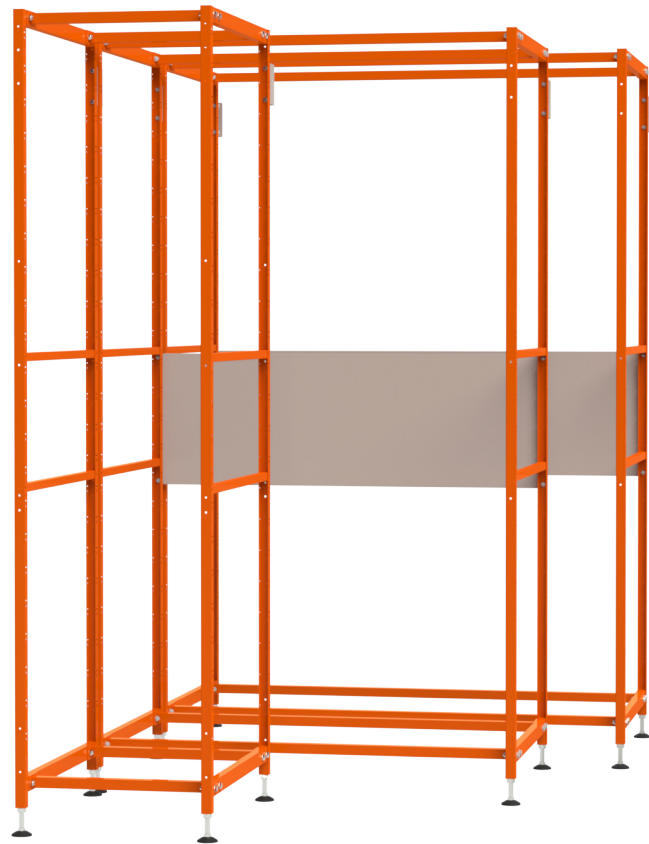
STORAGE SHELVING

FIXED - DEPTH 600

eolis 600x400

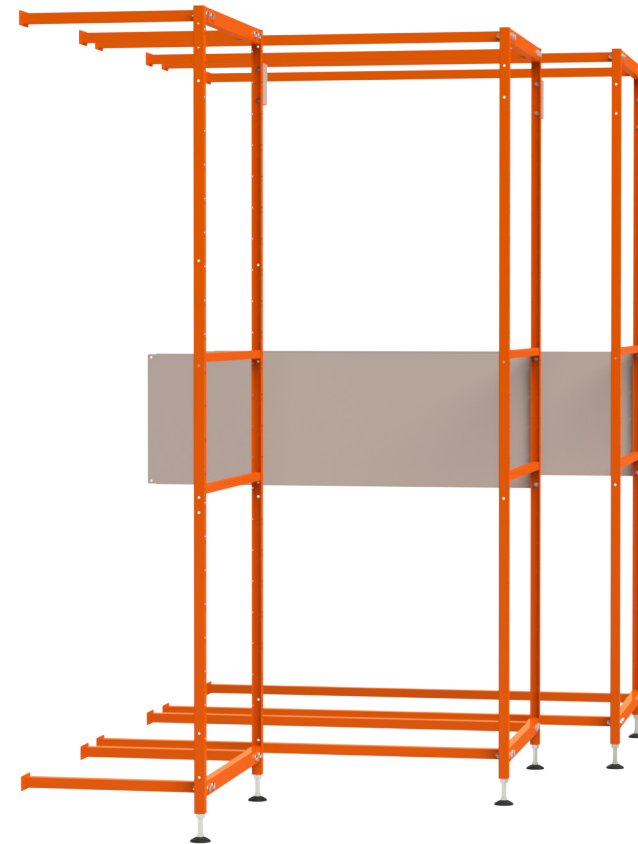
Eolis® Modular Shelving designed to optimize hospital storage areas (pharmacy, operating room, ...) and assist the healthcare staff with ergonomic (mobile, reclining), hygienic (removable equipments) and effective (all-in/all-out system) solutions.

DEPTH 600 FIXED SHELVING BASE SHELVING UNITS



400x600 shelving unit base	Ref. 1002.33
1000x600 shelving unit base*	Ref. 1002.80
1200x600 shelving unit base*	Ref. 1002.84

DEPTH 600 FIXED SHELVING ADDITIONAL SHELVING SECTIONS



400x600 additional shelving section	Ref. 1002.34
1000x600 additional shelving section*	Ref. 1002.81
1200x600 additional shelving section*	Ref. 1002.85

FEATURES

ISO standard size 600x400 frames and equipments. Fitting with all the Eolis® 600x400 product range (transfer & storage cabinets, workstations and drawer blocks, trolleys and carts).

- Welded steel lateral frames with epoxy coating (8 colours choice)
- «U» frame structure (ladder & strut) built with screws and nuts
- Furnished wall (or back-to-back) mounting to stabilize the shelving and equip them with telescopic elements (drawers and shelves)
- *1000x400 and 1200x400 shelving furnished with back stiffener
- 4 height-adjustable floor pads
- Delivered knocked down

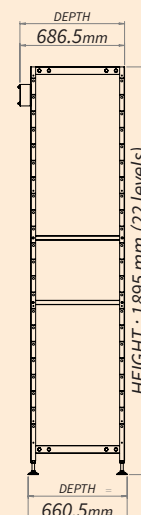
kg Maximum load capacity

Shelving (Base or Extension) **200kg**
Fixed shelves **80kg**
Telescopic drawers & shelves **50kg**

Overall dimensions (mm)

Fixed shelving - Depth 600

Space available	Space between each slides
22 levels with straight slides	75mm
20 levels from 1 inclined slide	
BASE	EXTENSION
463mm (L. 400)	438mm (L. 400)
1068mm (L. 1000)	1043mm (L. 1000)
1268mm (L. 1200)	1243mm (L. 1200)



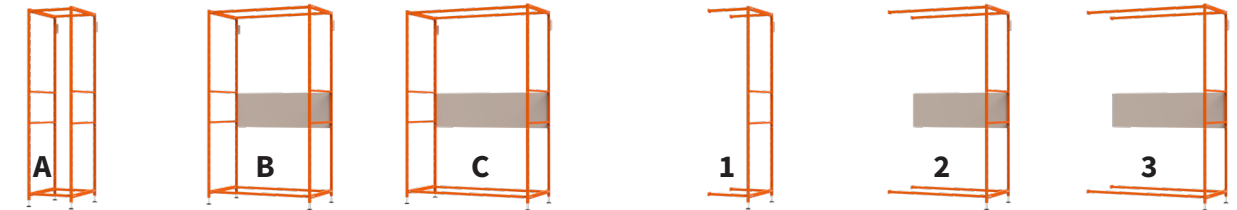
CREATE YOUR MODULAR SHELVING

FIXED - DEPTH 600

eolis 600x400

1

SELECT THE BASE UNITS + ADDITIONAL SECTIONS | DEPTH 600



Shelving units BASE - Depth 600

A. 400x600	Ref. 1002.33
B. 1000x600*	Ref. 1002.80
C. 1200x600*	Ref. 1002.84

*furnished with back stiffener

ADDITIONAL shelving sections - Depth 600

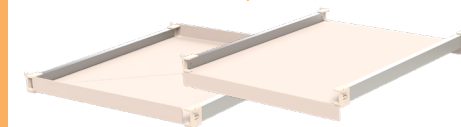
> All the **ADDITIONAL** shelving sections below fit with all the **Shelving Units BASE**.

1. 400x600	Ref. 1002.34
2. 1000x600*	Ref. 1002.81
3. 1200x600*	Ref. 1002.85



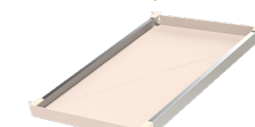
2

FIXED SHELVES one pair of slides included



Fixed horizontal shelves with raised or turned down edges (reversible) - Depth 600

400x600	Ref. 1200.31
1000x600	Ref. 1200.33
1200x600	Ref. 1200.35



Fixed and inclined shelves with raised edges
Depth 600

400x600	Ref. 1200.43
1000x600	Ref. 1200.45
1200x600	Ref. 1200.47



Extra Accessories for fixed shelves

Divider for fixed shelves with raised edges Depth 600	Ref. 1200.49
--	---------------------

3

TELESCOPIC SHELVES/DRAWERS pair of telescopic slides included



Telescopic shelves - Depth 600

400x600	Ref. 1200.51
1000x600	Ref. 1200.53
1200x600	Ref. 1200.55



Telescopic drawers - Depth 600

400x600 (Width: 8 notches)	Ref. 1200.57
1000x600 (Width: 21 notches)	Ref. 1200.59
1200x600 (Width: 26 notches)	Ref. 1200.61



Extra Accessories for telescopic drawers

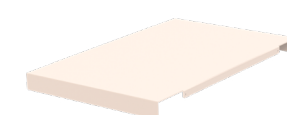
Dividers for telescopic drawers - Depth 600

a. Depth divider	Ref. 1200.63
b. Small divider* (2 notches - 78mm)	Ref. 1200.64
c. Medium divider* (3 notches - 128mm)	Ref. 1200.65
d. Large divider* (4 notches - 175mm)	Ref. 1200.66

* + a. Depth divider required - Ref. **1200.63**

4

TOP/BOTTOM SHELVES



Top or bottom shelves - Depth 600

400x600	Ref. 1200.37
1000x600	Ref. 1200.39
1200x600	Ref. 1200.41



**EXTRA
ACCESSORIES
PAGES 16 - 17**

LABEL HOLDERS



Horizontal label holder for drawers or shelves with raised edges - Ref. **1106.06**
Adhesive label holder for drawers or shelves with turned down edges - Ref. **1101.45**

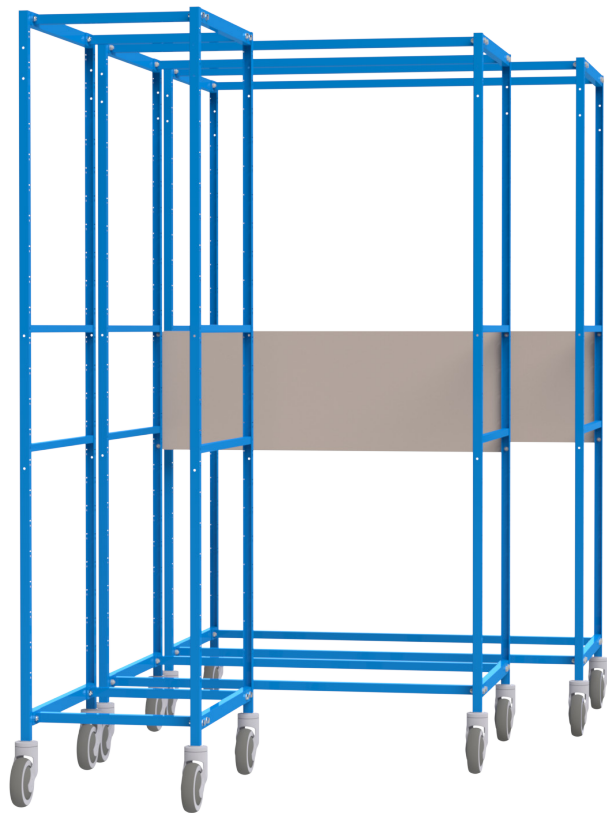
STORAGE SHELVING

MOBILE - DEPTH 600

eolis 600x400

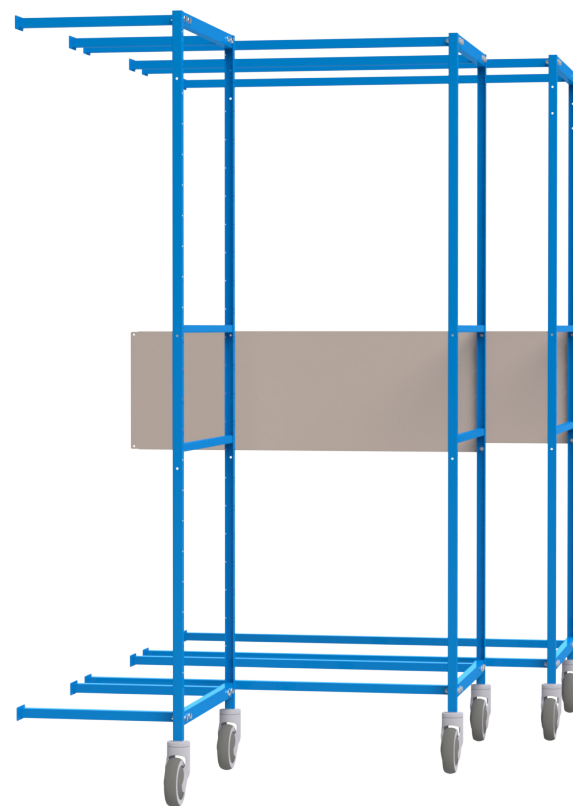
Eolis® Modular Shelving designed to optimize hospital storage areas (pharmacy, operating room, ...) and assist the healthcare staff with ergonomic (mobile, reclining), hygienic (removable equipments) and effective (all-in/all-out system) solutions.

DEPTH 600 MOBILE SHELVING BASE SHELVING UNITS



400x600 shelving unit base	Ref. 1002.28
Double 400x600 shelving unit	Ref. 1002.29
Triple 400x600 shelving unit	Ref. 1002.30
1000x600 shelving unit base*	Ref. 1002.72
1200x600 shelving unit base*	Ref. 1002.76

DEPTH 600 MOBILE SHELVING ADDITIONAL SHELVING SECTIONS



400x600 additional shelving section	Ref. 1002.69
1000x600 additional shelving section*	Ref. 1002.73
1200x600 additional shelving section*	Ref. 1002.77

> All this additional shelving sections above are not available for double and triple 400x600 shelving units.

FEATURES

ISO standard size 600x400 frames and equipments, fitting with all the Eolis® 600x400 product range (transfer & storage cabinets, workstations and drawers blocks, trolleys and carts).

- Welded lateral steel frames with epoxy coating (8 colours choice)
- «U» frame structure (ladder & strut) built with screws and nuts
- * 1000x400 and 1200x400 shelving furnished with back stiffener
- 4 polyamide wheels Ø125mm - Brakes as option
- Delivered knocked down

We advise you not to assemble more than 3 mobile shelving. Beyond that quantity, use fixed shelving.

Maximum load capacity

Shelving (Base or Extension) **200kg**
Fixed shelves **80kg**

Overall dimensions (mm) Mobile shelving - Depth 600

Space available		Space between each slides	43mm (Handle)	HEIGHT : 1993 mm (22 levels)
22 levels with straight slides		75mm		
20 levels from 1 inclined slide				
BASE	EXTENSION			
497mm (L. 400)	438mm (L. 400)			
1102mm (L. 1000)	1043mm (L. 1000)		DEPTH	
1302mm (L. 1200)	1243mm (L. 1200)		671.5mm	

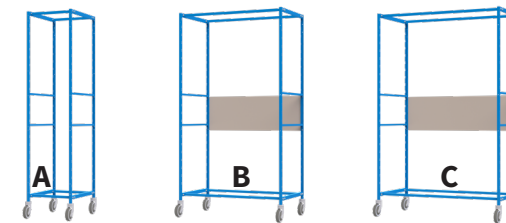
CREATE YOUR MODULAR SHELVING

MOBILE - DEPTH 600

eolis 600x400

1

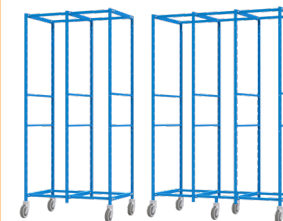
SELECT THE BASE UNITS + ADDITIONAL SECTIONS | DEPTH 600



Shelving units BASE - Depth 600

A. 400x600	Ref. 1002.28
B. 1000x600*	Ref. 1002.72
C. 1200x600*	Ref. 1002.76

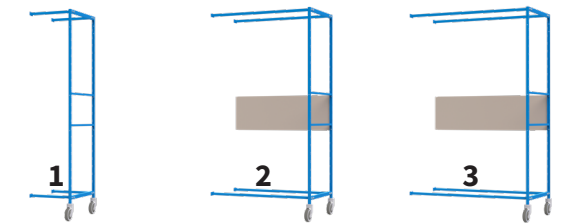
*furnished with back stiffener



Double shelving unit - Depth 600
400x600 (2 x 22 levels) - Ref. **1002.29**

Triple shelving unit - Depth 600
400x600 (3 x 22 levels) - Ref. **1002.30**

> Additional shelving sections are not available with double shelving unit 600x400.



ADDITIONAL shelving sections - Depth 600

> All the **ADDITIONAL** shelving sections below fit with all the **Shelving Units BASE**.

1. 400x600	Ref. 1002.69
2. 1000x600*	Ref. 1002.73
3. 1200x600*	Ref. 1002.77

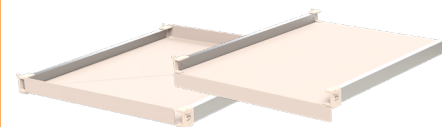
EXTENSIONS

Colour choice



2

FIXED SHELVES one pair of slides included



Fixed horizontal shelves with raised or turned down edges (reversible) - Depth 600

400x600	Ref. 1200.31
1000x600	Ref. 1200.33
1200x600	Ref. 1200.35



Fixed and inclined shelves with raised edges
Depth 600

400x600	Ref. 1200.43
1000x600	Ref. 1200.45
1200x600	Ref. 1200.47

Extra Accessories for fixed shelves



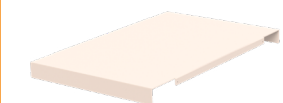
Divider for fixed shelves with raised edges
Depth 600 Ref. **1200.49**



It is strongly recommended not to use telescopic equipment (shelves & drawers) with mobile shelving.
We advise you to equip mobile shelving with fixed shelves (see above) or with baskets 600x400 available page 17.

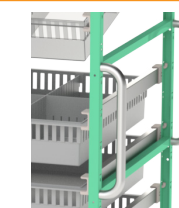
3

TOP/BOTTOM HANDLE BARS BRAKE WHEELS LABEL HOLDERS



Top or bottom shelves
Depth 600

400x600	Ref. 1200.37
1000x600	Ref. 1200.39
1200x600	Ref. 1200.41



Pair of stainless steel handle bars for mobile shelving*
On request**

*Available for mobile shelving
Depth 400 and Depth 600

**Should be specified in your order



Additional cost for
2 brake wheels Ø125mm
Ref. **1300.42**



Horizontal label holder for drawers or shelves with raised edges
Ref. **1106.06**

Adhesive label holder for drawers or shelves with turned down edges
Ref. **1101.45**

4

ADD EXTRA ACCESSORIES (see pages 16 - 17)

EXTRA ACCESSORIES FOR STORAGE SHELVING

eoli 600x400

EQUIP YOUR MODULAR SHELVING

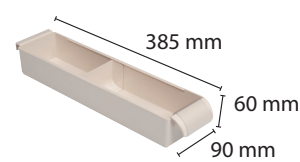
New

WITH BASKETS

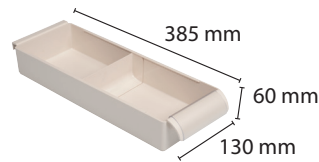
eoli 600x400

NOMINATIVE PATIENT BINS for fixed shelves (horizontal & inclined) and tray - Ref. 1100.26

HEIGHT - 1 LEVEL



1 level 1/6 - Ref. **1100.82**
Separation 1/6 - Ref. **1100.89**

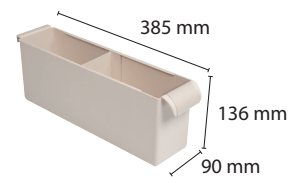


1 level 1/4 - Ref. **1100.86**
Separation 1/4 - Ref. **1100.91**

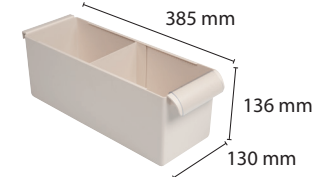


1 level 1/3 - Ref. **1103.90**
Separation 1/3 - Ref. **1103.93**

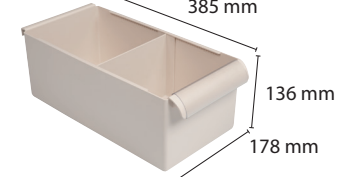
HEIGHT - 2 LEVELS



2 levels 1/6 - Ref. **1100.84**
Separation 1/6 - Ref. **1100.90**



2 levels 1/4 - Ref. **1100.88**
Separation 1/4 - Ref. **1100.92**



2 levels 1/3 - Ref. **1103.92**
Separation 1/3 - Ref. **1103.94**

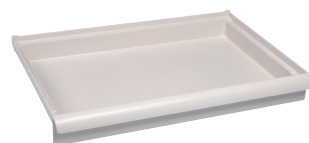
Maximum quantity of nominative patient bins by shelves according to the dimensions

600x400 shelves
6 x 1/6 bins - 4 x 1/4 bins
3 x 1/3 bins

1000x400 shelves
10 x 1/6 bins - 7 x 1/4 bins
5 x 1/3 bins

1200x400 shelves
13 x 1/6 bins - 9 x 1/4 bins
5 x 1/3 bins

DRAWERS 600x400 (pair of slides not included)



Drawer 1 level - Ref. **1600.30**
600 x 400 x 73 mm ext.
560 x 360 x 63 mm int.



Drawer 2 levels - Ref. **1600.31**
600 x 400 x 149 mm ext.
560 x 360 x 139 mm int.



Drawer 3 levels - Ref. **1600.32**
600 x 400 x 226 mm ext.
560 x 360 x 216 mm int.

Only available for Depth 400 shelving

TRAY 600x400



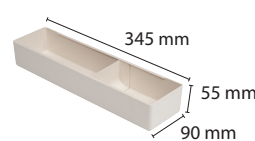
600x400 tray for nominative patient bins
Ref. **1100.26**

+ horizontal pair of slides required
Depth 400 - Ref. **1200.26**

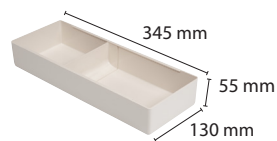
Only available for 600x400

SUBDIVISION BINS for drawers 600x400

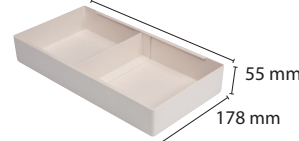
HEIGHT - 1 LEVEL



1 level 1/6 - Ref. **1100.81**
Separation 1/6 - Ref. **1100.89**

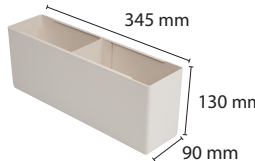


1 level 1/4 - Ref. **1100.85**
Separation 1/4 - Ref. **1100.91**

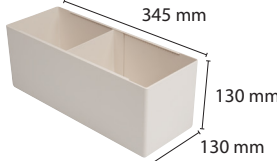


1 level 1/3 - Ref. **1103.89**
Separation 1/3 - Ref. **1103.93**

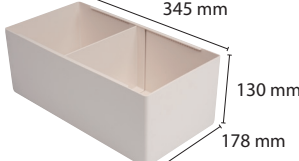
HEIGHT - 2 LEVELS



2 levels 1/6 - Ref. **1100.83**
Separation 1/6 - Ref. **1100.90**



2 levels 1/4 - Ref. **1100.87**
Separation 1/4 - Ref. **1100.92**



2 levels 1/3 - Ref. **1103.91**
Separation 1/3 - Ref. **1103.94**

RESIN SHELF



6mm thick antibacterial resin shelf
Ref. **1100.58**

+ horizontal pair of slides required
Depth 400 - Ref. **1200.26**
Depth 600 - Ref. **1200.27**

Available for 600x400 & 400x600

1 MESHED BASKETS 600x400 (Clear PC or Grey ABS plastic)



Clear Polycarbonate 1 level
standard basket - Ref. **1103.01**

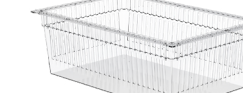
+ 2 end stops required - Ref. **1102.39**
+ pair of slides required (see below)



Clear Polycarbonate 2 levels
meshed basket - Ref. **1103.02**

Grey ABS plastic 2 levels meshed
basket - Ref. **1102.31**

+ 2 end stops required - Ref. **1102.39**
+ pair of slides required (see below)



Clear Polycarbonate 3 levels
meshed basket - Ref. **1103.03**

Grey ABS plastic 3 levels meshed
basket - Ref. **1102.32**

+ 2 end stops required - Ref. **1102.39**
+ pair of slides required (see below)

STANDARD BASKETS 600x400 (Grey ABS plastic only)



Grey ABS plastic 1 level standard
basket - Ref. **1102.30**

+ 2 end stops required - Ref. **1102.39**
+ pair of slides required (see below)



Grey ABS plastic 2 levels standard
basket - Ref. **1103.80**

+ 2 end stops required - Ref. **1102.39**
+ pair of slides required (see below)



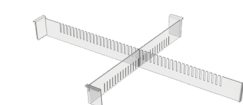
Grey ABS plastic 3 levels standard
basket - Ref. **1103.81**

+ 2 end stops required - Ref. **1102.39**
+ pair of slides required (see below)



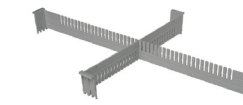
All baskets 600x400 (standard or meshed) are available
for fixed and mobile shelving Depth 400 & Depth 600

2 DIVIDERS for baskets 600x400 (Clear PC or Grey ABS plastic)



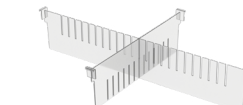
Clear Polycarbonate 600x50 divider
Ref. **1103.08**

Clear Polycarbonate 400x50 divider
Ref. **1103.07**



Grey ABS plastic 600x50 divider
Ref. **1102.33**

Grey ABS plastic 400x50 divider
Ref. **1102.34**



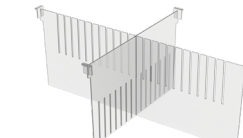
Clear Polycarbonate 600x100 divider
Ref. **1103.10**

Clear Polycarbonate 400x100 divider
Ref. **1103.09**



Grey ABS plastic 600x100 divider
Ref. **1102.35**

Grey ABS plastic 400x100 divider
Ref. **1102.36**



Clear Polycarbonate 600x200 divider
Ref. **1103.12**

Clear Polycarbonate 600x200 divider
Ref. **1103.11**



Grey ABS plastic 600x200 divider
Ref. **1102.37**

Grey ABS plastic 600x200 divider
Ref. **1102.38**

PAIR OF SLIDES

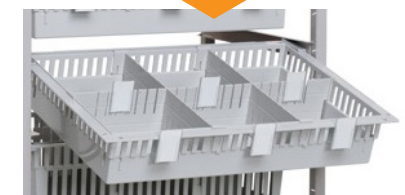


Pair of slides - Depth 400
Horizontal version - Ref. **1200.26**
Inclined version - Ref. **1200.28**



Pair of slides - Depth 600
Horizontal version - Ref. **1200.27**
Inclined version - Ref. **1200.29**

LABEL HOLDERS



Vertical label holder
Clear Polycarbonate - Ref. **1102.69**
PVC white plate - Ref. **1102.74**



Horizontal label holder
Clear Polycarbonate - Ref. **1106.06**
Horizontal label holder protection
Ref. **1106.07**

EXAMPLE OF STORAGE SHELVING

FIXED & MOBILE - DEPTH 400

eoli 600x400

EXAMPLE OF STORAGE SHELVING

FIXED & MOBILE - DEPTH 600

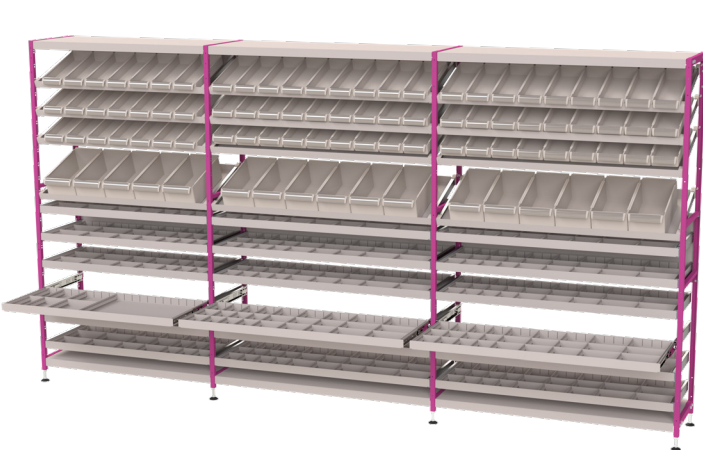
eoli 600x400

600x400 SHELVING UNIT BASE - FIXED



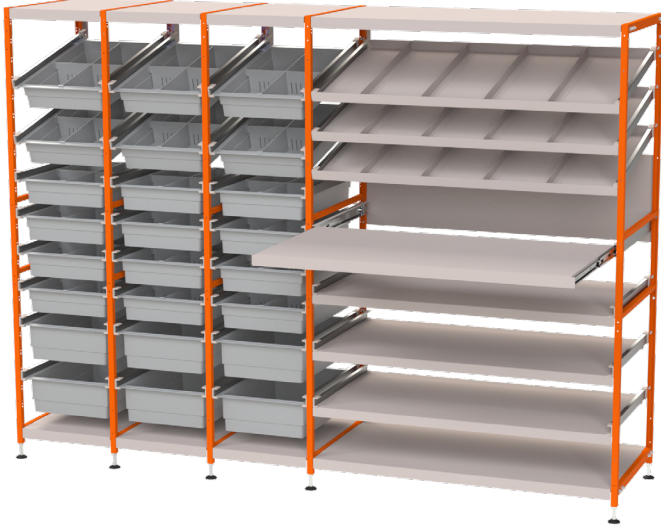
CONSTRUCTION:
600x400 shelving unit base Ref. **1002.31**
+ 600x400 shelving section Ref. **1002.32**
+ 1200x400 shelving section Ref. **1002.83**
equipped with accessories

1000x400 SHELVING UNIT BASE - FIXED



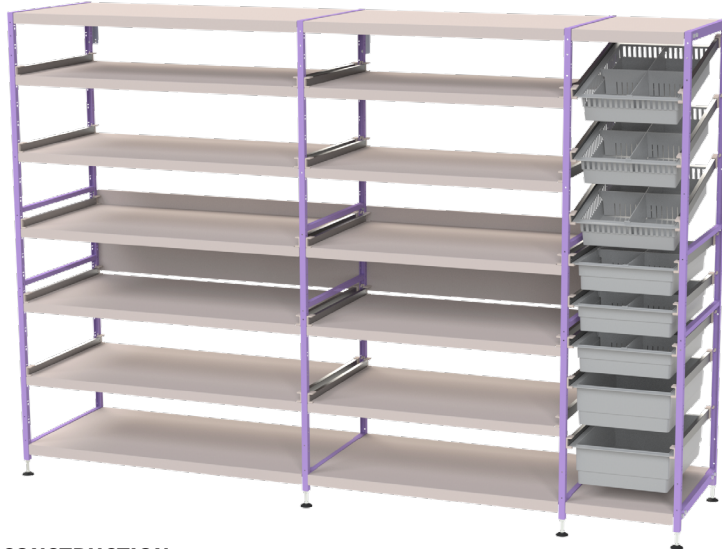
CONSTRUCTION:
1000x400 shelving unit base Ref. **1002.78**
+ (2x) 1200x400 shelving section Ref. **1002.83**
equipped with accessories

400x600 SHELVING UNIT BASE - FIXED



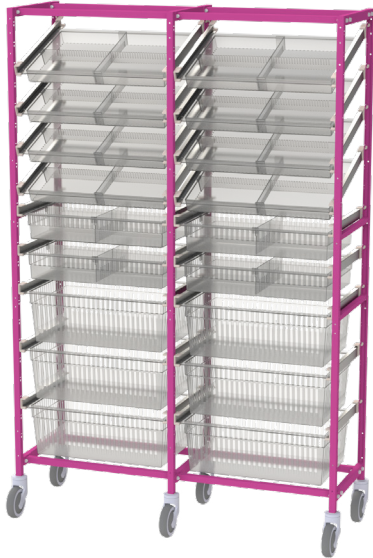
CONSTRUCTION:
400x600 shelving unit base Ref. **1002.33**
+ (2x) 400x600 shelving section Ref. **1002.34**
+ 1200x600 shelving section Ref. **1002.85**
equipped with accessories

400x600 SHELVING UNIT BASE - FIXED



CONSTRUCTION:
1200x600 shelving unit base Ref. **1002.84**
+ 1000x600 shelving section Ref. **1002.81**
+ 400x600 shelving section Ref. **1002.34**
equipped with accessories

DOUBLE 600x400 SHELVING UNIT - MOBILE



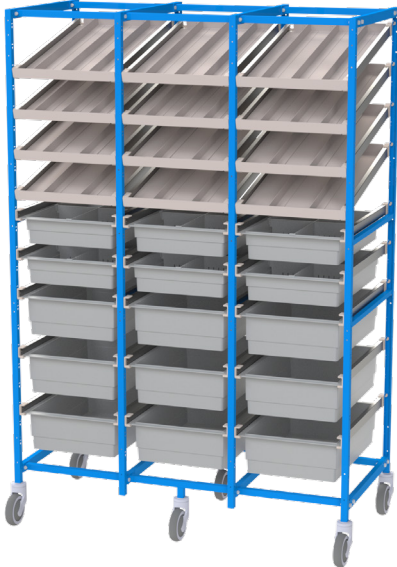
Shelving unit BASE equipped with accessories
Double 600x400 - Ref. **1002.26**

1000x400 SHELVING UNIT BASE - MOBILE



CONSTRUCTION:
1000x400 shelving unit base Ref. **1002.70**
+ 1000x400 shelving section Ref. **1002.71**
equipped with accessories

TRIPLE 400x600 SHELVING UNIT - FIXED



Shelving unit BASE equipped with accessories
Triple 400x600 - Ref. **1002.30**

400x600 SHELVING UNIT BASE - FIXED



CONSTRUCTION:
400x600 shelving unit base Ref. **1002.28**
+ 1000x600 shelving section Ref. **1002.73**
+ 400x600 shelving section Ref. **1002.69**
equipped with accessories

CUSTOMIZE YOUR STORAGE SHELVINGS WITH ACCESSORIES

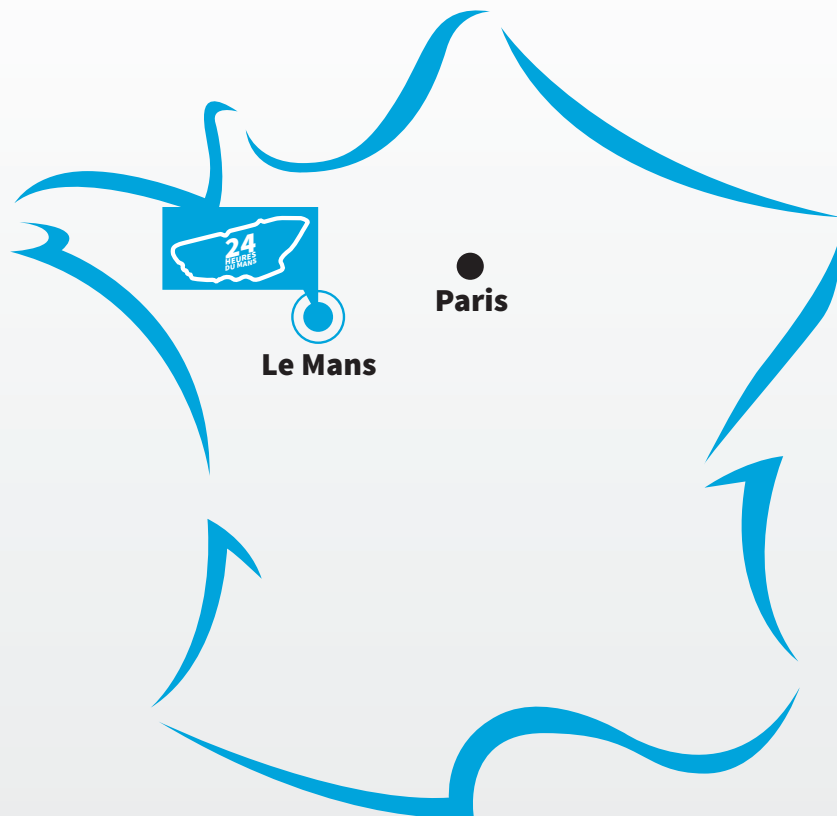
P.16-17



CUSTOMIZE YOUR STORAGE SHELVINGS WITH ACCESSORIES

P.16-17





Founded in 1947 in Le Mans - France, Villard is one of the leading companies in designing, manufacturing and selling hospital furniture. Every day we develop our range of carts with new material and new ergonomic design matching specific needs. Our long experience guarantees reliable and performing equipment listed in most hospitals, clinics and nursing homes. Our strong quality system and our know-how assure perfect quality products.

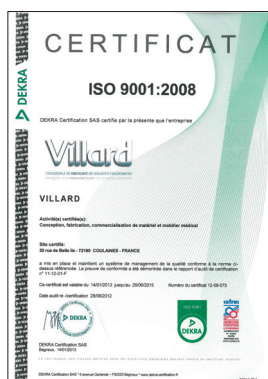
B.P. 40021 - ZA de Chapeau, Route de Ballon - 72190 Neuville/Sarthe - FRANCE

Tél. : 00 33 285 290 506

Fax : 00 33 285 290 510

export@villard-medical.com

www.villard-medical.com



**MADE IN
FRANCE**

Distributed by:

