

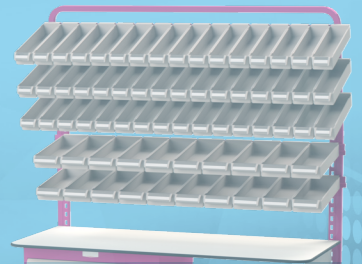
Villard

DESIGNER AND MANUFACTURER OF HOSPITAL FURNITURE

eoli
Modular Equipment

**DISTRIBUTION
SOLUTIONS**

PREPARATION



TRANSFER



STORAGE



DISTRIBUTION



QUALITY REQUIREMENT

www.villard-medical.com

TREATMENT TROLLEY

eolis® 600x400

The Eolis® 600 x 400 treatment trolleys are available in ABS/POLYPROPYLENE. The ISO standard size 600x400 offers you a great work surface. Resistant to disinfectants currently used in hospital environment.

600x400 COMPOSITE TROLLEY WITH RAISED EDGES SHELVES

New



2 raised edges shelves

Ref. **1003.01**

3 raised edges shelves

Ref. **1003.02**

- ABS/PMMA composite shelves with raised edges
- 700mm x 450mm shelves dimensions
- Aluminium profile frame 35x35mm with epoxy coating
- Raised edges shelves dimensions: H.20mm (on 3 sides) & H.10mm (front)
- 4 composite wheels (Ø100mm) with integrated threadguards, stainless-steel bearings
- 4 wheel buffers included
- Dimensions: H.979mm x W.743mm x D.495mm | Weight: 17.9kg

600x400 COMPOSITE TROLLEY WITH TURNED DOWN EDGES SHELVES

New



2 turned down edges shelves

Ref. **1003.03**

3 turned down edges shelves

Ref. **1003.04**

- ABS/PMMA composite shelves with turned down edges
- 700mm x 450mm shelves dimensions
- Aluminium profile frame 35x35mm with epoxy coating
- 4 composite wheels (Ø100mm) with integrated threadguards, stainless-steel bearings
- 4 wheel buffers included
- Dimensions: H.979mm x W.743mm x D.495mm | Weight: 22.7kg

EXTRA ACCESSORIES



Push handle
Ref. **1300.01**



Side rail
Ref. **1300.02**



Foldaway lateral shelf
Ref. **1300.03**



Telescopic shelf
Ref. **1300.27**

MORE ACCESSORIES NEXT PAGES



Colour choice



Plum



Green



Saffron



Coral



Lilac



Blue



Red



Grey

CREATE YOUR TREATMENT TROLLEY

eoli 600x400

1

SELECT THE BASE

New



600x400 Trolley with 2 raised edges shelves - Ref. **1003.01**



600x400 Trolley with 3 raised edges shelves - Ref. **1003.02**



600x400 Trolley with 2 turned down edges shelves - Ref. **1003.03**



600x400 Trolley with 3 turned down edges shelves - Ref. **1003.04**

2

DRAWERS one pair of slides included



1 level
600 x 400 x 73 mm

Ref. **1300.20**



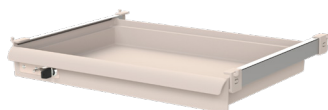
2 levels
600 x 400 x 149 mm

Ref. **1300.21**



3 levels
600 x 400 x 226 mm

Ref. **1300.22**



1 secured level with key lock - Ref. **1300.29**
600 x 400 x 73 mm

Ref. **1300.29**



2 secured level with key lock - Ref. **1300.30**
600 x 400 x 149 mm

Ref. **1300.30**

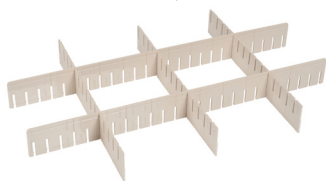


3 secured level with key lock - Ref. **1300.31**
600 x 400 x 226 mm

Ref. **1300.31**

3

COMPARTMENTS for 600x400 Drawers



COMPARTMENTS for small drawer 1 level

2 cpts.	1600.70	8 cpts.	1600.74
3 cpts.	1600.71	12 cpts.	1600.75
4 cpts.	1600.72	18 cpts.	1600.76
6 cpts.	1600.73	24 cpts.	1600.77



COMPARTMENTS for medium drawer 2 levels

2 cpts.	1600.80	8 cpts.	1600.84
3 cpts.	1600.81	12 cpts.	1600.85
4 cpts.	1600.82	18 cpts.	1600.86
6 cpts.	1600.83	24 cpts.	1600.87



COMPARTMENTS for big drawer 3 levels

Kit 2 cpts.	1600.90	8 cpts.	1600.94
Kit 3 cpts.	1600.91	12 cpts.	1600.95
Kit 4 cpts.	1600.92	18 cpts.	1600.96
Kit 6 cpts.	1600.93	24 cpts.	1600.97

4

COLOURS



Colour choice



Plum



Green



Saffron



Coral



Lilac



Blue



Red



Grey

5

ADD EXTRA ACCESSORIES (see pages 4 - 5)

EXTRA ACCESSORIES FOR TREATMENT TROLLEY

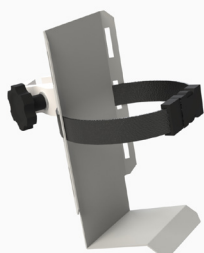
eoli 600x400



Upper guard rail
Ref. **1300.04**



Lower guard rail
Ref. **1300.06**



Universal sharps container holder
including clamp
Ref. **390.72**



Gloves box holder in
epoxy steel for rail

- Simple - Ref. **1100.74**
- Triple - Ref. **1501.35**



Side basket in epoxy steel

- 400 L x 100 D x 100 mm ht
Ref. **494.21**
- 400 L x 200 D x 150 mm ht
Ref. **494.23**



Liquid soap holder
including clamp

- Ø35mm clamp - Ref. **1300.19**
- Ø25mm clamp - Ref. **1101.01**



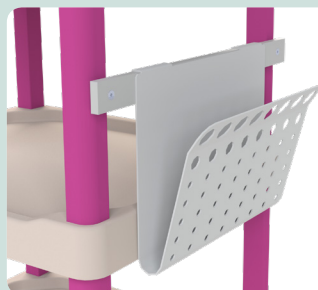
Single waste bin with removable lid
and support

- 10 liters - Ref. **1501.24**
- 15 liters - Ref. **1501.25**



Epoxy steel refuse bag holder
including clamp

- 10 to 20 liters - Ref. **392.93**
- 20 to 30 liters - Ref. **390.81**

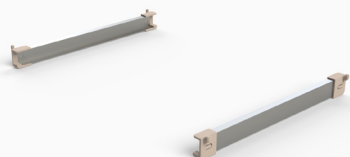


Lateral letter holder A4 size
Ref. **1101.96**

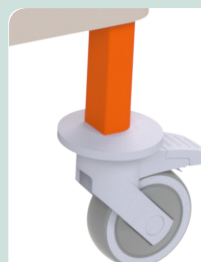
+ lateral rail not included - Ref. **1300.02**



Side rail
Ref. **1300.02**



Additional cost for
one pair of slides
Ref. **1300.26**



Additional cost for

- 2 brake wheels Ø100mm Ref. **1300.40**
- 4 wheels Ø125mm Ref. **1300.41**
- 4 antistatic wheels Ø100mm Ref. **1300.44**
- 2 brakes wheels for antistatic wheels Ø100mm Ref. **1300.45**

EXTRA ACCESSORIES FOR TREATMENT TROLLEY

eoliz 600x400



Adjustable IV poles

- 2 plastic curved hooks
Ref. **317.01**
- 2 stainless curved hooks
Ref. **317.03**
- 4 stainless curved hooks
Ref. **317.04**
- + clamp needed - Ref. **392.92**



Bridge - Ref. **1300.10**

Rail for bridge - Ref. **1300.11**



Shelf for bridge
Ref. **1300.12**

Shelf for bridge
with lateral hooks
Ref. **1300.13**



Line of plastic boxes

- Line of 6 boxes - Ref. **1500.16**
- Line of 5 boxes - Ref. **1500.17**
- Line of 4 boxes - Ref. **1500.18**
- Line of 3 boxes - Ref. **1500.19**
- + rail for bridge not included
Ref. **1300.11**



Fixed arm with universal
securized tray for laptop
Ref. **494.29**



Adjustable arms with universal
securized tray for laptop
Ref. **1103.53**

Tube Ø30mm
for computer holder
Ref. **1300.32**

+ load - Ref. **1300.33**



Vesa holder on short pivot
Ref. **1103.67**

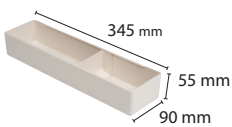
- + bridge - Ref. **1300.10**
- + rail for bridge - Ref. **1300.11**
- + load - Ref. **1300.33**



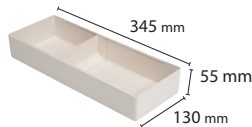
Telescopic front shelf
for keyboard
Ref. **1300.27**

SUBDIVISION BINS FOR DRAWERS 600x400

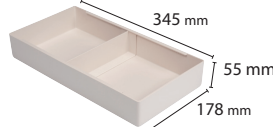
For 1 level drawer



1 level bin 1/6 - Ref. **1100.81**
Separation 1/6 - Ref. **1100.89**

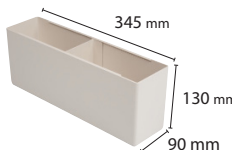


1 level bin 1/4 - Ref. **1100.85**
Separation 1/4 - Ref. **1100.91**

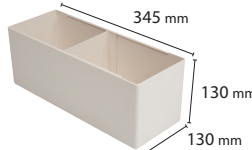


1 level bin 1/3 - Ref. **1103.89**
Separation 1/3 - Ref. **1103.93**

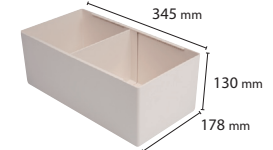
For 2 levels drawer



2 levels bin 1/6 - Ref. **1100.83**
Separation 1/6 - Ref. **1100.90**



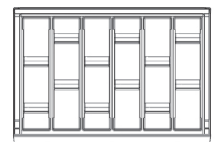
2 levels bin 1/4 - Ref. **1100.87**
Separation 1/4 - Ref. **1100.92**



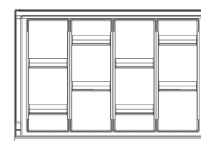
2 levels bin 1/3 - Ref. **1103.91**
Separation 1/3 - Ref. **1103.94**



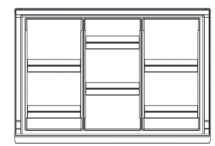
EQUIPPED DRAWERS EXAMPLES



Drawer Ref. **1300.20** with 6 bins
1/6 Ref. **1100.81** and separations



Drawer Ref. **1300.20** with 4 bins
1/4 Ref. **1100.85** and separations



Drawer Ref. **1300.20** with 3 bins
1/3 Ref. **1103.89** and separations

TREATMENT TROLLEY

eolis COMPACT

The Eolis® COMPACT Treatment Trolley are available in ABS/Polypropylene resistant to disinfectants currently used in hospitals. Very light and manoeuvrable, the COMPACT size offers you a big storage volume.

COMPACT COMPOSITE TROLLEY WITH RAISED EDGES SHELVES

New



2 raised edges shelves

Ref. **1003.05**

3 raised edges shelves

Ref. **1003.06**

- ABS/PMMA composite shelves with raised edges
- 540mm x 450mm shelves dimensions
- Aluminium profile frame 35x35mm with epoxy coating
- Raised edges shelves dimensions: H.20mm (on 3 sides) & H.10mm (front)
- 4 composite wheels (Ø100mm) with integrated threadguards, stainless-steel bearings
- 4 wheel buffers included
- Dimensions: H.979mm x W.580mm x D.495mm | Weight: 15.5kg

COMPACT COMPOSITE TROLLEY WITH TURNED DOWN EDGES SHELVES

New



2 turned down edges shelves

Ref. **1003.07**

3 turned down edges shelves

Ref. **1003.08**

- ABS/PMMA composite shelves with turned down edges
- 540mm x 450mm shelves dimensions
- Aluminium profile frame 35x35mm with epoxy coating
- 4 composite wheels (Ø100mm) with integrated threadguards, stainless-steel bearings
- 4 wheel buffers included
- Dimensions: H.979mm x W.580mm x D.495mm | Weight: 19kg

EXTRA ACCESSORIES



Push handle
Ref. **1300.01**



Side rail
Ref. **1300.02**



Foldaway lateral shelf
Ref. **1300.03**



Telescopic shelf
Ref. **1300.28**

MORE ACCESSORIES NEXT PAGES



CREATE YOUR TREATMENT TROLLEY

eolix COMPACT

1

SELECT THE BASE

New



COMPACT Trolley with 2 raised edges shelves - Ref. **1003.05**



COMPACT Trolley with 3 raised edges shelves - Ref. **1003.06**



COMPACT Trolley with 2 turned down edges shelves - Ref. **1003.07**



COMPACT Trolley with 3 turned down edges shelves - Ref. **1003.08**

2

DRAWERS one pair of slides included



1 level
344 x 437 x 50 mm

Ref. **1300.20**



2 levels
344 x 437 x 110 mm

Ref. **1300.21**

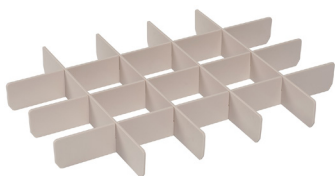


3 levels
344 x 437 x 170 mm

Ref. **1300.22**

3

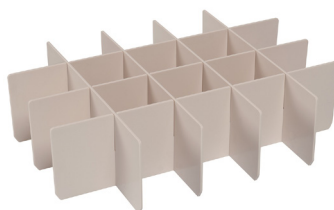
COMPARTMENTS for COMPACT Drawers



COMPARTMENTS for small drawer 1 level

20 compartments

Ref. **1500.59**



COMPARTMENTS for medium drawer 2 levels

20 compartments

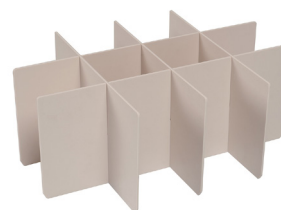
Ref. **1500.60**

8 compartments

Ref. **1500.64**

6 compartments

Ref. **1500.63**



COMPARTMENTS for big drawer 3 levels

12 compartments

Ref. **1500.61**

8 compartments

Ref. **1500.69**

6 compartments

Ref. **1500.68**

4

COLOURS



Colour choice



Plum



Green



Saffron



Coral



Lilac



Blue



Red



Grey

5

ADD EXTRA ACCESSORIES (see pages 8 - 9)

EXTRA ACCESSORIES FOR TREATMENT TROLLEY

eolix **COMPACT**



Push handle
Ref. **1300.01**



Foldaway lateral shelf
Ref. **1300.03**



Upper guard rail
Ref. **1300.07**



Lower guard rail
Ref. **1300.09**



Universal sharps container holder
including clamp
Ref. **390.72**



Gloves box holder in
epoxy steel for rail

- Simple - Ref. **1100.74**
- Triple - Ref. **1501.35**



Side basket in epoxy steel

- 400 L x 100 D x 100 mm ht
Ref. **494.21**
- 400 L x 200 D x 150 mm ht
Ref. **494.23**



Liquid soap holder
including clamp

- Ø35mm clamp - Ref. **1300.19**
- Ø25mm clamp - Ref. **1101.01**



Single waste bin with removable lid
and support

- 10 liters - Ref. **1501.24**
- 15 liters - Ref. **1501.25**



Epoxy steel refuse bag holder
including clamp

- 10 to 20 liters - Ref. **392.93**
- 20 to 30 liters - Ref. **390.81**



Additional cost for
one pair of slides
Ref. **1300.26**



Side rail
Ref. **1300.02**

EXTRA ACCESSORIES FOR TREATMENT TROLLEY

eolix **COMPACT**



Adjustable IV poles

- 2 plastic curved hooks
Ref. **317.01**
- 2 stainless curved hooks
Ref. **317.03**
- 4 stainless curved hooks
Ref. **317.04**
- + clamp needed - Ref. **392.92**



Bridge - Ref. **1300.10**

Rail for bridge - Ref. **1300.15**



Shelf for bridge
Ref. **1300.16**

Shelf for bridge
with lateral hooks
Ref. **1300.17**



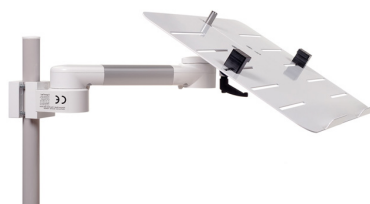
Line of plastic boxes

- Line of 6 boxes - Ref. **1500.16**
- Line of 5 boxes - Ref. **1500.17**
- Line of 4 boxes - Ref. **1500.18**
- Line of 3 boxes - Ref. **1500.19**

+ rail for bridge not included
Ref. **1300.11**



Fixed arm with universal
securized tray for laptop
Ref. **494.29**



Adjustable arms with universal
securized tray for laptop
Ref. **1103.53**

Tube Ø30mm
for computer holder
Ref. **1300.32**

+ load - Ref. **1300.33**

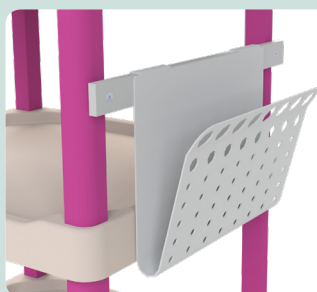


Vesa holder on short pivot
Ref. **1103.67**

- + bridge - Ref. **1300.10**
- + rail for bridge - Ref. **1300.11**
- + load - Ref. **1300.33**

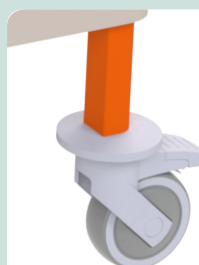


Telescopic front shelf
for keyboard
Ref. **1300.28**



Lateral letter holder A4 size
Ref. **1101.96**

+ lateral rail not included - Ref. **1300.02**



Additional cost for

- 2 brake wheels Ø100mm Ref. **1300.40**
- 4 wheels Ø125mm Ref. **1300.41**
- 4 antistatic wheels Ø100mm Ref. **1300.44**
- 2 brakes wheels for antistatic wheels Ø100mm Ref. **1300.45**

DISCOVER EXAMPLES OF TREATMENT TROLLEY EQUIPPED NEXT PAGES



TREATMENT CART

eoliz 600x400

The Eolis® 600 x 400 treatment carts are available in ABS/POLYPROPYLENE. The ISO standard size 600x400 offers you a great volume of storage. Resistant to disinfectants currently used in hospital environment.

TREATMENT CART FULLY EQUIPPED



Ref. **1006.01 T01** Exactly equipped as per picture:

- Cart (ABS + Polymer) with 5 drawers + 2 adjustable side rails (1 left, 1 right)
- Partitions in two drawers (small and medium)
- 1 bin + lateral basket + 3 bottles holder
- 1 sharp container holder
- Moulded worktop + central locking system with key
- Wheels 125 mm + 2 brakes, stainless steel balls bearing
- Sticker TREATMENT
- 77 W x 51 D x 101 H cm

PROCEDURE CART GENERAL CART ISOLATION CART



Ref. **1006.01 G01** Exactly equipped as per picture:

- Cart ABS polymer with 5 drawers + 2 adjustable side rails (1 left, 1 right)
- Adjustable push handle
- Rim for optimal confort
- A large range of accessories is also available to adapt the configuration (procedure, isolation...)
- Wheels 125 mm + 2 brakes, stainless steel balls bearing
- Sticker TREATMENT
- 77 W x 51 D x 101 H cm

OTHER LOCKS



Key lock

Ref. **1600.01**



Seal lock

Ref. **1600.02**



Code lock

Ref. **1600.03**



Badge lock

Ref. **1600.04**

SEE MORE ACCESSORIES PAGES 18 TO 21



Plum



Green



Saffron



Coral



Lilac



Blue



Red

CREATE YOUR CART

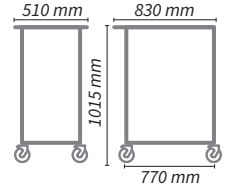
eoliz 600x400

1 THE BASE



Ref. **1006.01** - Capacity max. 10 levels

- Lateral and rear colour ABS panels.
- ABS upper beige tray with rims.
- Entirely modular conception offering big flexibility of layout.
- Integrated height-adjustable push handle.
- 2 height-adjustable normalized rails (1 on each side).
- 4 swivel Ø 125 mm polypropylene with threadguards wheels, 2 with brakes, stainless steel ball bearing.
- All around ABS bumper.
- Weight of an empty cart : 27.5 kg



2 LOCKING



Key lock

Ref. **1600.01**



Seal lock

Ref. **1600.02**



Code lock

Ref. **1600.03**



Badge lock

Ref. **1600.04**

3 DRAWERS (max. 10 levels)



1 level

600 x 400 x 63 mm

Ref. **1600.30**



2 levels

600 x 400 x 138 mm

Ref. **1600.31**

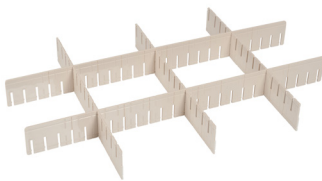


3 levels

600 x 400 x 216 mm

Ref. **1600.32**

4 COMPARTMENTS for 600x400 Drawers



COMPARTMENTS for small drawer 1 level

2 cpts.	1600.70	8 cpts.	1600.74
3 cpts.	1600.71	12 cpts.	1600.75
4 cpts.	1600.72	18 cpts.	1600.76
6 cpts.	1600.73	24 cpts.	1600.77



COMPARTMENTS for medium drawer 2 levels

2 cpts.	1600.80	8 cpts.	1600.84
3 cpts.	1600.81	12 cpts.	1600.85
4 cpts.	1600.82	18 cpts.	1600.86
6 cpts.	1600.83	24 cpts.	1600.87



COMPARTMENTS for big drawer 3 levels

Kit 2 cpts.	1600.90	8 cpts.	1600.94
Kit 3 cpts.	1600.91	12 cpts.	1600.95
Kit 4 cpts.	1600.92	18 cpts.	1600.96
Kit 6 cpts.	1600.93	24 cpts.	1600.97

5 COLOURS



Plum



Green



Saffron



Coral



Lilac



Blue



Red

6 ADD EXTRA ACCESSORIES (see pages 18 to 21)

TREATMENT CART WITH ROLLING SHUTTER

eoliz 600x400

TREATMENT CART WITH BASKETS



Ref. **1006.11 T01** EOLIS cart 600x400 exactly equipped as per picture:

- ABS, top tray with rims
- Extract. rolling shutter enabling disinfection + **key lock**
- 2 adj. rails left/right + adj. handle
- 4 wheels Ø 125 mm, 2 brakes
- 5 baskets (2 small, 2 medium, 1 big) with separations (options)
- Sticker TREATMENT
- 77W x 59D x 101H

TREATMENT CART WITH BASKETS



Ref. **1006.11 T02** EOLIS cart 600x400 exactly equipped as per picture:

- ABS, top tray with rims
- Extract. rolling shutter enabling disinfection + **key lock**
- 2 adj. rails left/right + adj. handle
- 4 wheels Ø 125 mm, 2 brakes
- 4 baskets (4 medium) with separations (options)
- Sticker TREATMENT
- 77W x 59D x 101H

TREATMENT CART WITH DRAWERS AND CODE LOCK



Ref. **1006.11 T03** EOLIS cart 600x400 exactly equipped as per picture:

- ABS, top tray with rims
- Extract. rolling shutter enabling disinfection + **electronic lock**
- 2 adj. rails left/right + adj. handle
- 4 wheels Ø 125 mm, 2 brakes
- 5 drawers (2 small, 2 medium, 1 big)
- Sticker TREATMENT
- 77W x 59D x 101H

TREATMENT / MEDICATION CART WITH PATIENT DRAWERS



Ref. **1006.11 T04** EOLIS cart 600x400 exactly equipped as per picture:

- ABS, top tray with rims
- Extract. rolling shutter enabling disinfection + **key lock**
- 2 adj. rails left/right + adj. handle
- 4 wheels Ø 125 mm, 2 brakes
- 15 drawers (12 big, 3 small) with separations
- Sticker TREATMENT
- 77W x 59D x 101H

ADD EXTRA ACCESSORIES pages 48 to 51



Plum



Green



Saffron



Coral



Lilac



Blue



Red

MEDICATION CART WITH ROLLING SHUTTER

eoli 600x400

MEDICATION CART 18 PATIENTS WITH CODE LOCK



Ref. **1006.11 T05** EOLIS cart 600x400 exactly equipped as per picture:

- ABS, top tray with rims
- Extract. rolling shutter enabling disinfection + **electronic lock**
- 2 adj. rails left/right
- 4 wheels Ø 125 mm, 2 brakes
- 18 patient bins + 3 drawers
- Sticker MEDICATION
- 77W x 59D x 101H

MEDICATION CART 21 PATIENTS WITH KEY LOCK



Ref. **1006.11 T06** EOLIS cart 600x400 exactly equipped as per picture:

- ABS, top tray with rims
- Extract. rolling shutter enabling disinfection + **key lock**
- 2 adj. rails left/right
- 4 wheels Ø 125 mm, 2 brakes
- **21 patient bins** + 3 drawers
- Sticker MEDICATION
- 77W x 59D x 101H

MEDICATION CART 40 PATIENTS WITH CASSETTE



Ref. **1006.11 T07** EOLIS cart 600x400 exactly equipped as per picture:

- ABS, top tray with rims
- Extract. rolling shutter enabling disinfection + **key lock**
- 2 adj. rails left/right
- 4 wheels Ø 125 mm, 2 brakes
- **40 patient bins** + 1 cassette + 1 basket
- Sticker MEDICATION
- 77W x 59D x 101H

MEDICATION CART 90 PATIENTS PILLS DISPENSER



Ref. **1006.11 T08** EOLIS cart 600x400 exactly equipped as per picture:

- ABS, top tray with rims
- Extract. rolling shutter enabling disinfection + **key lock**
- 2 adj. rails left/right
- 4 wheels Ø 125 mm, 2 brakes
- **90 patient pills dispensers**
- Sticker MEDICATION
- 77W x 59D x 101H

ADD EXTRA ACCESSORIES pages 48 to 51

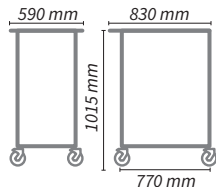


CREATE YOUR TROLLEY WITH

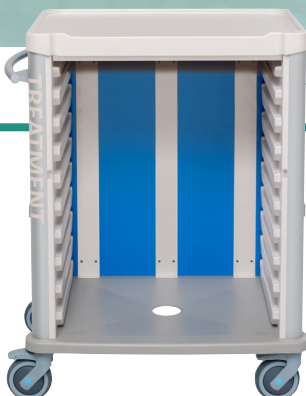
1

THE BASE

Without shutter



10 levels



Ref. **1006.11**

10 levels

- Lateral and rear colour ABS panel
- ABS upper beige tray with rims
- Rolling shutter with key, code or badge lock in option (closing from top to bottom)
- Extractable rolling shutter enabling the cleaning and the disinfection
- Integrated height-adjustable push handle included

2

LOCKING SHUTTER (1 level)



Rolling shutter only (no lock) Ref. **1600.10**



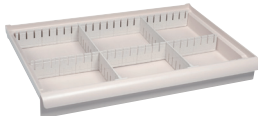
Rolling shutter + key lock Ref. **1600.11**

3

DRAWERS

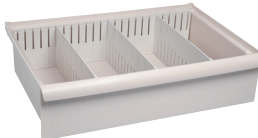
1 level - Ref. **1600.30**

600 x 400 x 63 mm ht



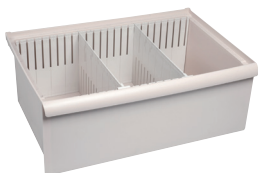
2 levels - Ref. **1600.31**

600 x 400 x 138 mm ht



3 levels - Ref. **1600.32**

600 x 400 x 216 mm ht



COMPARTMENTS

Compartments for small drawer 1 level

2 cpts. 1600.70	8 cpts. 1600.74
3 cpts. 1600.71	12 cpts. 1600.75
4 cpts. 1600.72	18 cpts. 1600.76
6 cpts. 1600.73	24 cpts. 1600.77

Compartments for medium drawer 2 levels

2 cpts. 1600.80	8 cpts. 1600.84
3 cpts. 1600.81	12 cpts. 1600.85
4 cpts. 1600.82	18 cpts. 1600.86
6 cpts. 1600.83	24 cpts. 1600.87

Compartments for big drawer 3 levels

2 cpts. 1600.90	8 cpts. 1600.94
3 cpts. 1600.91	12 cpts. 1600.95
4 cpts. 1600.92	18 cpts. 1600.96
6 cpts. 1600.93	24 cpts. 1600.97

SHELVES

Telescopic shelf - Ref. **1101.99**

- 1 level



Resin shelf - Ref. **1100.58**

- 1 level



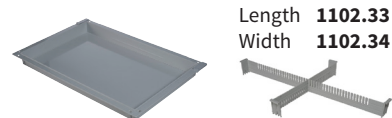
Polypropylene shelf - Ref. **1100.26**

- With rim - 1 level

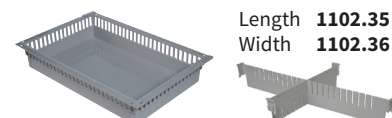


BASKETS

1 level Ref. **1102.30** - 50 mm ht Separations



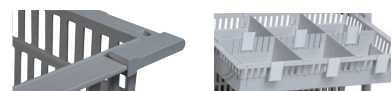
2 levels - Ref. **1102.31** - 100 mm ht



3 levels - Ref. **1102.32** - 200 mm ht



End stop **1102.39** Label holders **1102.69**



Drawers, baskets, patient bins and medication trays can be mixed - maximum 10 levels capacity

4

COLOURS



Plum



Green



Saffron



Coral



Lilac



Blue



Red

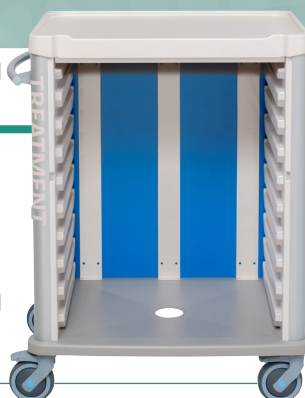
5

ADD EXTRA ACCESSORIES (see pages 18 to 21)

- 2 height-adjustable normalized rails (1 on each side) included
- 4 swivel Ø 125 mm polypropylene with threadguards wheels, 2 with brakes, stainless steel ball bearing
- All around ABS bumpers
- Weight of an empty cart with rolling shutter: 29.5 kg
- Rolling shutter is taking 1 level, the rests for components

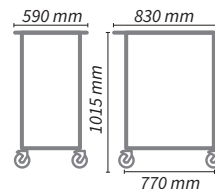
Ref. **1006.11**
10 levels

10 levels



THE BASE

Without shutter



1

LOCKING SHUTTER (1 level)

2



Rolling shutter + Code lock Ref. **1600.12**



Rolling shutter + Badge lock Ref. **1600.13**

PATIENT BINS

1 level - Ref. **1100.26 OP3**

- 6 patients bins + 6 separations
- 90 x 385 x 60 mm ht each



1 level - Ref. **1100.26 OP4**

- 4 patients bins + 4 separations
- 130 x 385 x 60 mm ht each



1 level - Ref. **1100.26 OP5**

- 3 patients bins + 3 separations
- 178 x 385 x 60 mm ht each



2 levels - Ref. **1100.26 OP6**

- 6 patients bins + 6 separations
- 90 x 385 x 136 mm ht each



2 levels - Ref. **1100.26 OP7**

- 4 patients bins + 4 separations
- 130 x 385 x 136 mm ht each



2 levels - Ref. **1100.26 OP8**

- 3 patients bins + 3 separations
- 178 x 385 x 136 mm ht each



MEDICATION TRAYS

1 level - Ref. **1103.41**

- 7 pills dispenser
- with 3 separations
- 78 x 380 x 55 mm ht



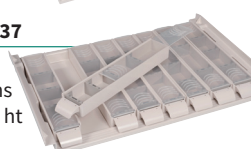
1 level - Ref. **1103.38**

- 8 pills dispenser
- with 3 separations
- 65 x 380 x 65 mm ht



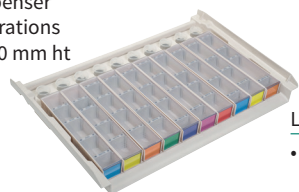
1 level - Ref. **1103.37**

- 8 pills dispenser
- with 3 separations
- 65 x 380 x 40 mm ht



1 level - Ref. **1103.39**

- 10 pills dispenser
- with 4 separations
- 28 x 280 x 40 mm ht



CASSETTE - LABELS

2 levels - Ref. **1600.36**

3 levels - Ref. **1600.37**



Handle - Ref. **1600.42**

Labels - Ref. **1103.36**

- Colored sheets of 28 precut labels



Label Holder - Ref. **1103.35**

- Pack of 24 label holders



3

Drawers, baskets, patient bins and medication trays can be mixed - maximum 10 levels capacity

COLOURS

4



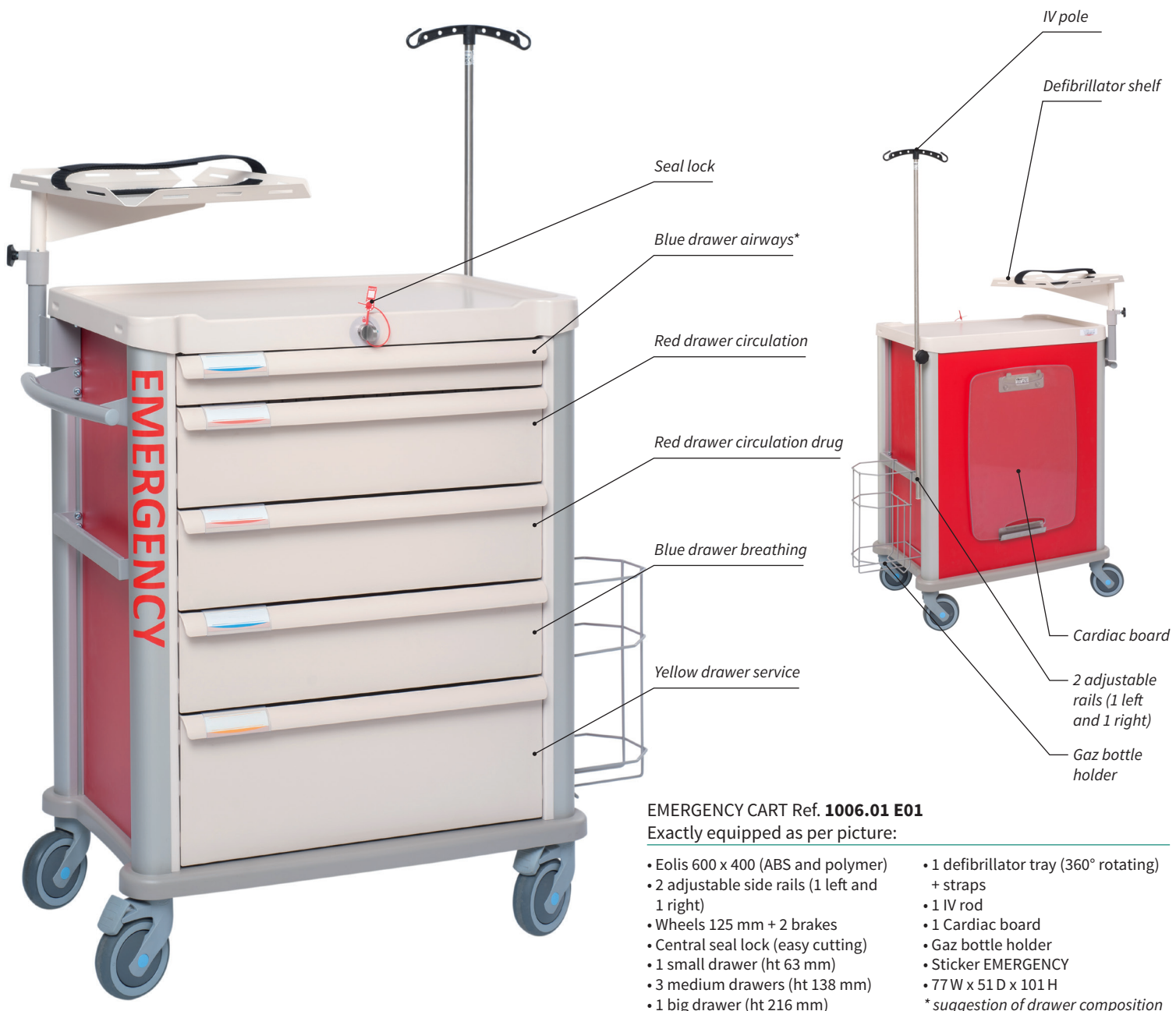
ADD EXTRA ACCESSORIES (see pages 18 to 21)

5

EMERGENCY CART

eolis 600x400

Strong and manoeuvrable for quick first emergency situations. Full of external and internal accessories such as cardiac board, central locking system with seals, defibrillator holder (rotating 360°), infusion rod, gaz bottler holder, separation kit drawers...



EXTRA ACCESSORIES

Red seals (qty 100) **1100.47**



Holder for suction unit **1103.88**



5 sockets + switch **1101.50**



Colour choice

Plum

Green

Saffron

Coral

Lilac

Blue

Red

ANAESTHESIA CART

eolis 600x400

Eolis 600 x 400 cart perfectly designed for anaesthesia. All the accessories have been created to optimize the anaesthesia procedure. The finishing and the material (ABS and Polypropylene) used are especially designed for optimal hygiene and infection control.



ANAESTHESIA CART Ref. **1006.01 A01** Exactly equipped as per picture:

- Eolis 600 x 400 (ABS and polymer)
- 3 adjustable side rails (2 left, 1 right)
- Central key lock
- 2 small drawers (ht 63 mm)
- 1 medium drawer (ht 138 mm)
- 2 big drawers (ht 216 mm)
- 1 bridge + medical rail + top shelf
- Sticker ANAESTHESIA
- 77 W x 51 D x 101 H
- Wheels 125 mm + 2 brakes
- Height of the trolley with bridge: 168 cm

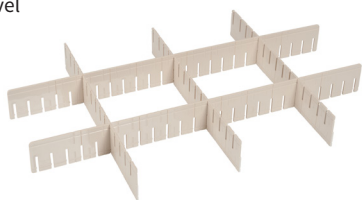


ANAESTHESIA CART Ref. **1006.01 A02** Exactly equipped as per picture:

- Eolis 600 x 400 (ABS and polymer)
- 3 adjustable side rails (2 left, 1 right)
- Central key lock
- 2 small drawers (ht 63 mm) + separation 12 cases.
- 1 medium drawer (ht 138 mm)
- 2 big drawers (ht 216 mm)
- 1 bridge + 1 medical rail
- Line of 4 boxes + basket
- 1 bin
- 1 sharp container holder
- Catheter holder
- Sticker ANAESTHESIA
- 77 W x 51 D x 101 H
- Wheels 125 mm + 2 brakes
- Height of the cart with bridge: 168 cm

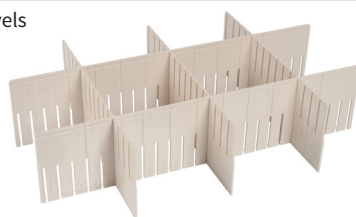
COMPARTMENTS

1 level



2 cpts.	1600.70	8 cpts.	1600.74
3 cpts.	1600.71	12 cpts.	1600.75
4 cpts.	1600.72	18 cpts.	1600.76
6 cpts.	1600.73	24 cpts.	1600.77

2 levels



2 cpts.	1600.80	8 cpts.	1600.84
3 cpts.	1600.81	12 cpts.	1600.85
4 cpts.	1600.82	18 cpts.	1600.86
6 cpts.	1600.83	24 cpts.	1600.87

3 levels



2 cpts.	1600.90	8 cpts.	1600.94
3 cpts.	1600.91	12 cpts.	1600.95
4 cpts.	1600.92	18 cpts.	1600.96
6 cpts.	1600.93	24 cpts.	1600.97

SEE MORE ACCESSORIES PAGES 18 TO 21

EXTRA ACCESSORIES

eolis 600x400



Sliding lateral shelf antimicrobial
Ref. **1600.43**

• only for trolley with drawer Ref. 1006.01



Foldaway lateral shelf - Ref. **1500.01**

• For Eolis Ref. 1006.01 and 1006.11



Telescopic front shelf
Ref. **1600.27**

• For Eolis Ref. 1006.01 and cabinets



Telescopic front drawer
lockable - Ref. **1600.28**

• For Eolis Ref. 1006.01 and cabinets



Telescopic front drawer
lockable - Ref. **1600.29**

• For Eolis Ref. 1006.11 and cabinets



Telescopic epoxy steel shelf
600x400 - Ref. **1101.99**

• For Eolis Ref. 1006.11 and cabinets



Guard rail - Ref. **1600.40**



Guard rail with bottle
holder - Ref. **1600.41**



3 cases bottle holder - Ref. **392.28**



Additional adjustable rail
Ref. **1500.03**

• 330 L x 10 D x 35 H



2 curved hooks adjustable IV pole
Ref. **1500.23**

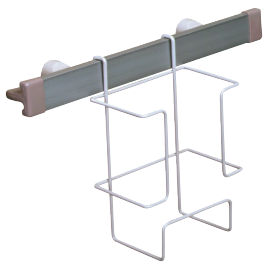


Universal sharps container holder
Ref. **1101.97**

• without sharp container

EXTRA ACCESSORIES

eoliz 600x400



Gloves box holder in epoxy steel for rail
Ref. **1100.74**



Epoxy steel lateral basket

- 300 L x 100 D x 100 mm ht
Ref. **1101.90**
- 300 L x 160 D x 100 mm ht
Ref. **1101.91**



Side basket in epoxy steel

- 400 L x 200 D x 150 mm ht
Ref. **494.23**
- 400 L x 100 D x 100 mm ht
Ref. **494.21**



Lateral box in epoxy steel for filing pockets - Ref. **1101.95**

- 328 L x 165 D x 245 mm ht



Lateral letter holder A4 size

- 1 case - Ref. **1500.29**
- 2 cases - Ref. **1500.28**
- 3 cases - Ref. **1500.27**



Sheet holder for rail - Ref. **1101.96**



Single waste bin with removable lid and support

- 10 liters - Ref. **1501.24**
- 15 liters - Ref. **1501.25**



Double waste bins with removable lids and support

- 2 x 10 litres - Ref. **1501.26**
- 2 x 15 litres - Ref. **1501.28**



Refuse bin with lid operated by knee
Ref. **1100.80**



Steel refuse bag holder with clamps for standard rail

- 10 to 20 liters - Ref. **1501.20**
- 20 to 30 liters - Ref. **1501.21**



Stickers

- Ref. **1600.44** - Standard sticker: MEDICATION or TREATMENT or ANAESTHESIA
- Ref. **1600.45** - Customized stickers (max. 10 characters)



Additional cost for 4 antistatic wheels with 2 brakes - Ref. **1600.46**

Additional cost for directional wheel
Ref. **1100.77**

EXTRA ACCESSORIES

eoliz 600x400



Boxes holder - Ref. **1600.24**

Bridge - Ref. **1500.11**

Rail for bridge - Ref. **1600.22**

Liquid soap holder - Ref. **1500.21**



Shelf for bridge
Ref. **1600.23**

Line of plastic boxes

- line of 6 boxes
Ref. **1500.16**

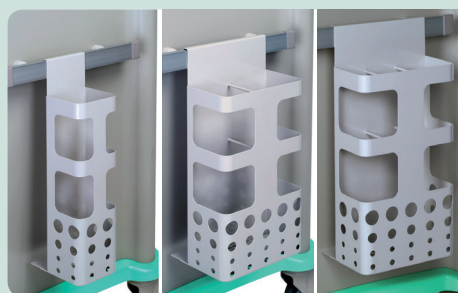
- line of 5 boxes
Ref. **1500.17**

- line of 4 boxes
Ref. **1500.18**



Boxes

- 1 litre - 103 L x 165 D x 83 mm HT - Ref. **890.65**
- 3,5 litres - 145 L x 240 D x 125 mm HT - Ref. **890.66**
- 10 litres - 207 L x 345 D x 165 mm HT - Ref. **890.67**



Catheter holder for rail

- 1 storage - Ref. **1101.94**
- 2 storages - Ref. **1101.92**
- 3 storages - Ref. **1101.93**



Swivel lateral defibrillator
shelf - Ref. **1500.75**



Cardiac board with handles - Ref. **1600.25**

- 600 x 430 mm **CE**



Gaz bottle holder Ø150 mm max.
Ref. **1100.42**



Drawers for toxic drugs with lid and lock

- 1 level (63 mm H) - Ref. **1600.33**
- 2 levels (138 mm H) - Ref. **1600.34**
- 3 levels (216 mm H) - Ref. **1600.35**



Files holder on telescopic rail
Ref. **1102.14**

- Capacity: 11 cases 40 mm
- 4 levels

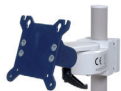


Files holder with compartments and removable partitions

- For medical files - 18 cases (3 L x 32 D x 36 H) - 5 levels - Ref. **1102.01**
- For X-ray files - 18 cases (3 L x 40 D x 48 H) - 7 levels - Ref. **1102.04**

EXTRA ACCESSORIES

eolis 600x400



Tube Ø 30 mm for computer holder
Ref. **1500.80**

Vesa holder on short pivot - Ref. **1103.55**



Screen and keyboard
antimicrobial holders
on short pivot
Ref. **1103.66**

- Height-adjustable and rotating



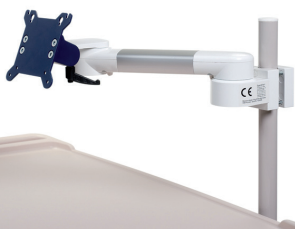
Fixed arm with universal
securized tray for laptop
Ref. **1500.81**

- Height-adjustable and rotating



Arms with universal securized
tray for laptop

- Fixed height - Ref. **1103.53**
- Variable height - Ref. **1103.54**



Arms with universal screen
holder

- Fixed height - Ref. **1103.56**
- Variable height - Ref. **1103.57**



Compact central unit holder - Ref. **1600.26**



Self-powered cart computer Venus

Dual battery provides 125W power for standing 6 hours of operation run non-stop 7/24 by swapping batteries. Fan-less and no vent hole design reduce the risk of cross-infectial.

- Touch-screen 19" - Ref. **1104.30**

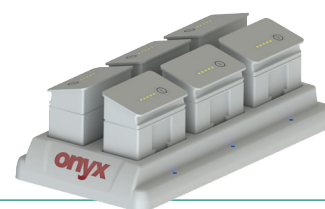


2 batteries kit
Li-ion 10.8V / 5800mAh
Ref. **1104.34**



Slot battery bank (2/6)

- For 2 batteries 24V / 150W - Ref. **1104.35**
- For 6 batteries 24V / 250W - Ref. **1104.36**



Lithium universal battery (Life P04) 220 V AC - 250W / h
Ref. **1104.52**



Lithium universal battery
(Life P04) 220 V AC - 250W / h
Ref. **1504.01**

- Battery integrated in the cart.
- Capacity: 250 W / h for Eolis cart.

TREATMENT CART

eoliz COMPACT

The Eolis® COMPACT Treatment Cart are available in ABS/Polypropylene resistant to disinfectants currently used in hospitals. Very light and manoeuvrable, the COMPACT size offers you a big storage volume.



COMPACT Treatment cart - 16 levels

Ref. **1005.01**

COMPACT Treatment cart - 14 levels


Ref. **1005.02**

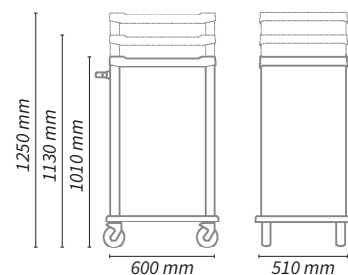
COMPACT Treatment cart - 12 levels

Ref. **1005.03**

FEATURES

- ABS/PMMA composite upper tray with rims - Lateral and rear colour ABS panel
- Extractable rolling shutter enabling the cleaning and the disinfection
- Rolling shutter with key, code or badge lock as option (closing from bottom to top)
- Push handle and 2 height-adjustable normalized rails (1 on each side) included
- 4 composite wheels (Ø100mm) with integrated threadguards, 1 with brake
- All around grey ABS bumpers

 Empty weight: simple - from 28kg / double - from 45kg



EXTRA ACCESSORIES

ACCESSORIES PAGES 26 - 27



Foldaway lateral shelf
Ref. **1500.01**



White epoxy lateral basket
Ref. **494.21**



Sharp holder
Ref. **1101.97**



Single waste bin with removable lid and support (10L) - Ref. **1501.24**



Plum



Green



Saffron



Coral



Lilac



Blue



Red

CUSTOMIZE YOUR TREATMENT CART

eolix COMPACT

1

SELECT THE BASE

New



COMPACT Treatment cart
16 levels - Ref. **1005.01**



COMPACT Treatment cart
14 levels - Ref. **1005.02**



COMPACT Treatment cart
12 levels - Ref. **1005.03**

2

ROLLING SHUTTER with lock



Rolling shutter with **key lock**
Simple cart - Ref. **1501.01**



Rolling shutter with **code lock**
Simple cart - Ref. **1501.03**



Rolling shutter with **badge lock**
Simple cart - Ref. **1501.05**

3

DRAWERS



Drawer with handle - 1 level
Ref. **1500.50**



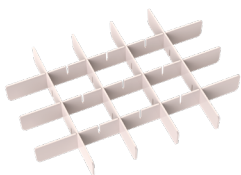
Drawer with handle - 2 levels
Ref. **1500.51**



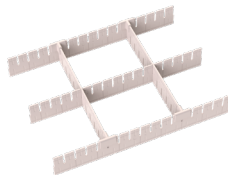
Drawer with handle - 3 levels
Ref. **1500.52**

4

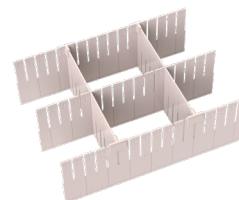
COMPARTMENTS for COMPACT drawers



20 compartments for drawer 1 level
Ref. **1500.59**



6 compartments for drawer 2 levels
Ref. **1500.63**



6 compartments for drawer 3 levels
Ref. **1500.61**

5

COLOURS



Plum



Green



Saffron



Coral



Lilac



Blue



Red

6

ADD EXTRA ACCESSORIES (see pages 26 - 27)

MEDICATION CART

eolis COMPACT

The Eolis® COMPACT Medication Cart are designed to be used for weekly and/or daily distribution. The COMPACT size offers you a big storage volume, allowing the maximum capacity of 32 trays with daily pill dispensers.

COMPACT MEDICATION CARTS - SIMPLE



COMPACT Medication cart - 16 levels	Ref. 1005.01
COMPACT Medication cart - 14 levels	Ref. 1005.02
COMPACT Medication cart - 12 levels	Ref. 1005.03


COMPACT MEDICATION CARTS - DOUBLE

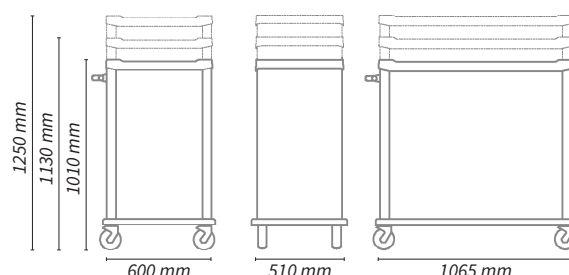


COMPACT Medication cart - 2 x 16 levels	Ref. 1005.04
COMPACT Medication cart - 2 x 14 levels	Ref. 1005.05
COMPACT Medication cart - 2 x 12 levels	Ref. 1005.06

FEATURES

- ABS/PMMA composite upper tray with rims - Lateral and rear colour ABS panel
- Extractable rolling shutter enabling the cleaning and the disinfection
- Rolling shutter with key, code or badge lock as option (closing from bottom to top)
- Push handle and 2 height-adjustable normalized rails (1 on each side) included
- 4 composite wheels (Ø100mm) with integrated threadguards, 1 with brake
- All around grey ABS bumpers

 Empty weight: simple - from 28kg / double - from 45kg



EXTRA ACCESSORIES

ACCESSORIES PAGES 26 - 27



3 compartment bottle holder
Ref. **392.28**



Telescopic shelf (1 level)
Ref. **1500.74**



Gloves box holder (simple) Ref. **1100.74**
Gloves box holder (triple) Ref. **1501.35**



Additional cost for 4 Ø125mm wheels
2 with brakes - Ref. **1500.92**



Plum



Green



Saffron



Coral



Lilac



Blue



Red

CUSTOMIZE YOUR MEDICATION CART

eoliz COMPACT

1 SELECT THE BASE

New



COMPACT Medication cart - 16 levels
SIMPLE - Ref. **1005.01**
DOUBLE (2 x 16 levels) - Ref. **1005.04**



COMPACT Medication cart - 14 levels
SIMPLE - Ref. **1005.02**
DOUBLE (2 x 14 levels) - Ref. **1005.05**



COMPACT Medication cart - 12 levels
SIMPLE - Ref. **1005.03**
DOUBLE (2 x 12 levels) - Ref. **1005.06**

2 ROLLING SHUTTER with lock



Rolling shutter with **key lock**
Simple cart - Ref. **1501.01**
Double cart - Ref. **1501.02**



Rolling shutter with **code lock**
Simple cart - Ref. **1501.03**
Double cart - Ref. **1501.04**



Rolling shutter with **badge lock**
Simple cart - Ref. **1501.05**
Double cart - Ref. **1501.06**

3 MEDICATION TRAYS for weekly or daily distribution



Tray dotted for **weekly distribution**
with 7 nominative pill dispensers
Ref. **1500.41**



Tray dotted for **daily distribution**
with 6 nominative pill dispensers
Ref. **1500.44**



35 cups holder (30ml) Ref. **1500.30**
for tray COMPACT Ref. **1500.40**
30ml cup (1 unit) Ref. **1100.55**

4 COMPACT DRAWERS



Drawer with handle - 1 level
Ref. **1500.50**



Drawer with handle - 2 levels
Ref. **1500.51**



Drawer with handle - 3 levels
Ref. **1500.52**

5 COLOURS



Plum



Green



Saffron



Coral



Lilac



Blue



Red

6 ADD EXTRA ACCESSORIES (see pages 26 - 27)

EXTRA ACCESSORIES

eoliz COMPACT



Foldaway lateral shelf
Ref. **1500.01**



Telescopic shelf for keyboard or file
Ref. **1500.74**



Additional adjustable rail
Ref. **1500.03**

- 330 L x 10 D x 35 H



Universal sharps container holder
Ref. **1101.97**

- without sharp container



Side basket in epoxy steel

- 400 L x 200 D x 150 mm ht
Ref. **494.23**
- 400 L x 100 D x 100 mm ht
Ref. **494.21**



Steel refuse bag holder with
clamps for standard rail

- 10 to 20 liters - Ref. **1501.20**
- 20 to 30 liters - Ref. **1501.21**



Single waste bin with removable lid
and support

- 10 liters - Ref. **1501.24**
- 15 liters - Ref. **1501.25**



Double waste bins with removable
lids and support

- 2 x 10 litres - Ref. **1501.26**
- 2 x 15 litres - Ref. **1501.28**



Refuse bin with lid operated by knee
Ref. **1100.80**



Gloves box holder in epoxy steel for rail

- Simple - Ref. **1100.74**
- Triple - Ref. **1501.35**



2 curved hooks adjustable IV pole
Ref. **1500.23**



3 cases bottle holder
Ref. **392.28**

EXTRA ACCESSORIES

eolix COMPACT



Boxes holder - Ref. **1500.20**

Bridge - Ref. **1500.11**

Rail for bridge - Ref. **1500.12**

Liquid soap holder - Ref. **1500.21**

Gloves box holder - Ref. **1100.74**



Shelf for bridge
Ref. **1500.14**

Line of plastic boxes

- line of 6 boxes
Ref. **1500.16**

- line of 5 boxes
Ref. **1500.17**

- line of 4 boxes
Ref. **1500.18**

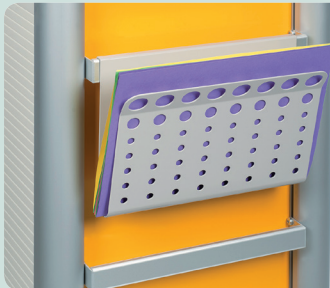


Epoxy steel lateral basket

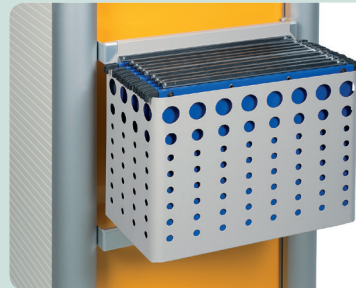
- 300 L x 100 D x 100 mm ht
Ref: **1101.90**
- 300 L x 160 D x 100 mm ht
Ref: **1101.91**



Bottle holder for normalized rail
Ref. **1500.25**



Sheet holder for rail - Ref. **1101.96**



Lateral box in epoxy steel for filing pockets - Ref. **1101.95**

- 328 L x 165 D x 245 mm ht



Cup dispenser with clamp
for normalized rail
Ref. **1500.26**



Labels for pill dispensers
Ref. **1103.36**

- Sheet with 28 adhesive labels



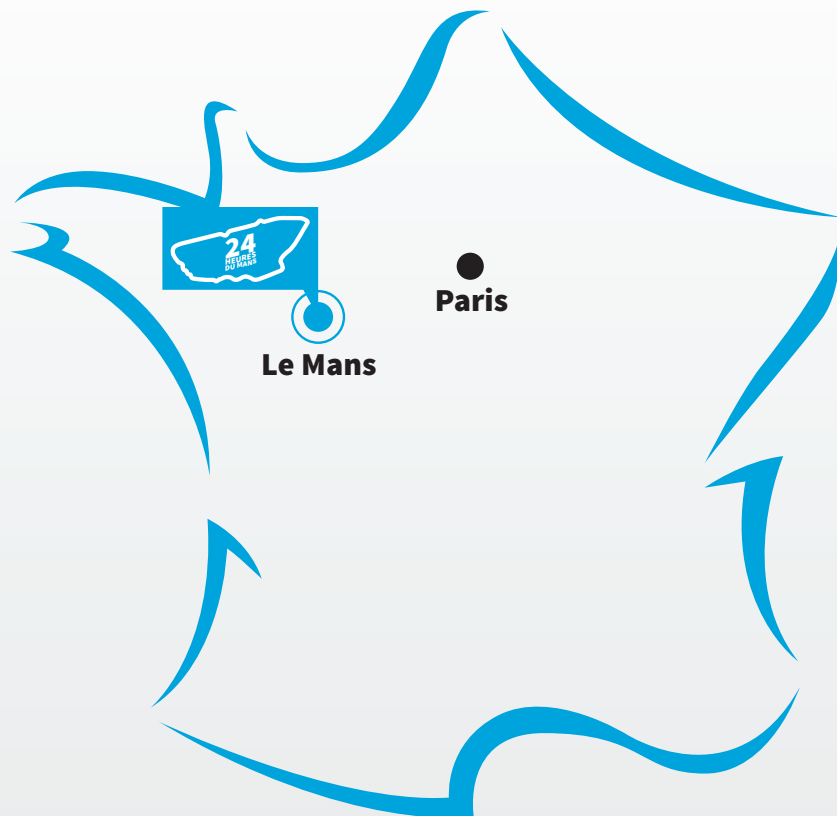
Stickers

- Ref: **1600.44** - Standard sticker: MEDICATION or TREATMENT or ANAESTHESIA
- Ref: **1600.45** - Customized stickers (max. 10 caracters)



Additional cost for 4 antistatic wheels
with 4 brakes - Ref: **1600.46**

Additional cost for directional wheel
with brakes - Ref: **1100.77**



Founded in 1947 in Le Mans - France, Villard is one of the leading companies in designing, manufacturing and selling hospital furniture. Every day we develop our range of carts with new material and new ergonomic design matching specific needs. Our long experience guarantees reliable and performing equipment listed in most hospitals, clinics and nursing homes. Our strong quality system and our know-how assure perfect quality products.

B.P. 40021 - ZA de Chapeau, Route de Ballon - 72190 Neuville/Sarthe - FRANCE

Tél. : 00 33 285 290 506

Fax : 00 33 285 290 510

export@villard-medical.com

www.villard-medical.com



**MADE IN
FRANCE**

Distributed by:

